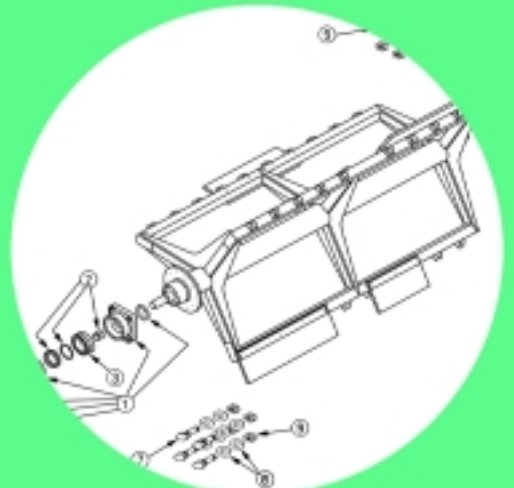
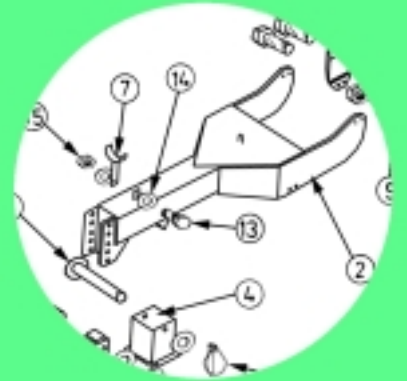
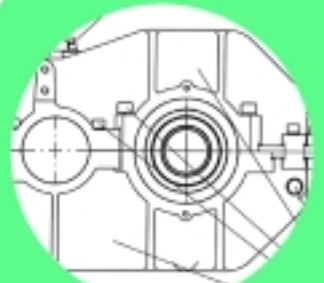


REDROCK

Engineering Ltd

Vari Cut Diet Feeders

Parts Manual



Issue 1
Sept. '02

REDROCK

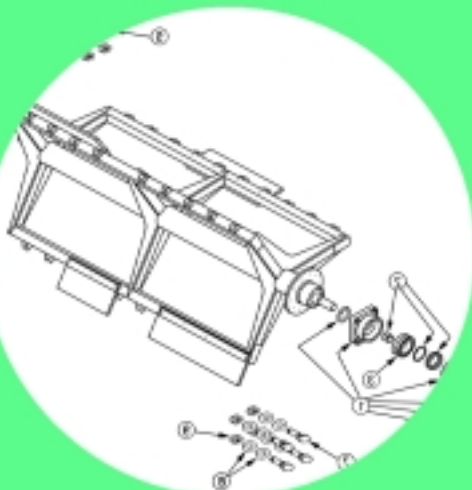
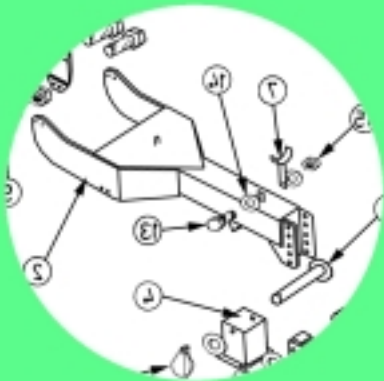
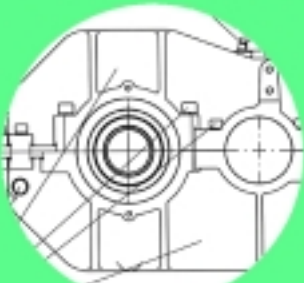
Engineering Ltd

Vari Cut Diet Feeders

Parts Manual

In accordance with the program of continuous development at **REDROCK** Engineering Ltd, alterations in the specification may be made at any time without notice.

Therefore **REDROCK** Engineering Ltd will not accept responsibility for any discrepancies which may occur between the specification of machines and the descriptions thereof contained in this publication.



REDROCK Engineering Ltd

77 RedRock Road,
Collone,
Armagh,
BT60 2BL

Tel: 028 3755 2390

Fax: 028 3755 2399

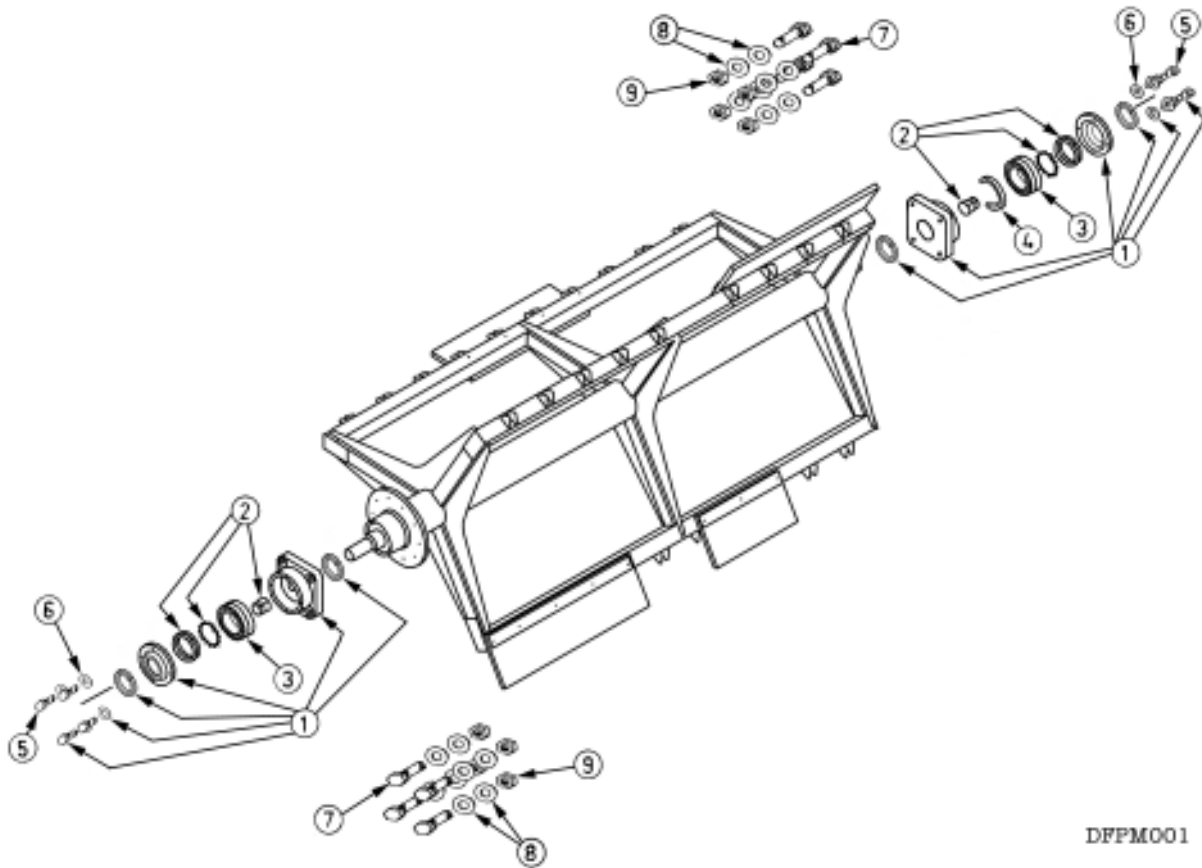
www.redrock-engineering.com

sales@redrock-engineering.com



Drive System

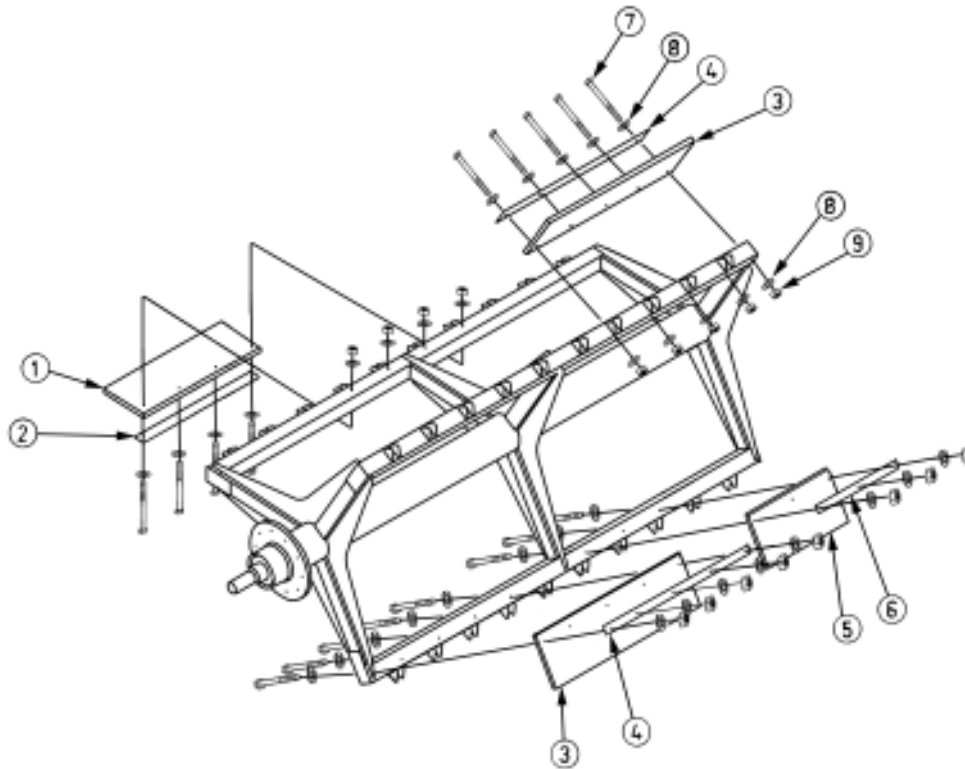
Drive System	3
1.01 Rotor Bearings	4
1.02 Paddle Rubbers	5
1.03 Auger Shaft Parts	7
1.04 Rotar Drive Train.....	8
1.05 Auger Drive Train.....	10
1.06 Jockey Arm Assembly	11
1.07 Auger Drive Tensioner	12
1.08 Front Discharge Diet Feeder Gearbox	16
1.09 Rear Discharge Diet Feeder Gearbox	22
1.10 Change-Over Mechanism	25



DFPM001

1.01 Rotor Bearings

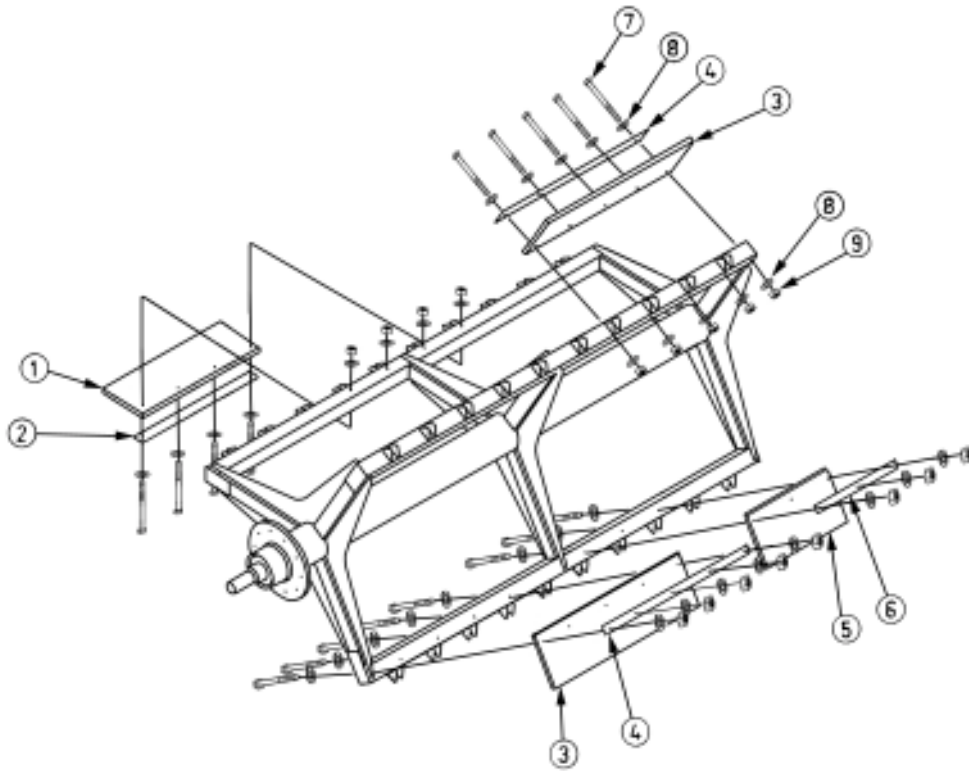
Item	Part Number	Description	Qty.	Notes
1	BGA9302AF	Bearing Housing Kit	2	
2	BGH317	Taper Lock Kit	2	
3	BG22217ESK	Roller Bearing	2	
4	BGFRM150-3	Packing Ring	1	
5	FA10820P	M8 x 25 Bolt	8	
6	FA00110P	M8 Washer	8	
7	FA11630	M16 x 60 Bolt	8	
8	FA00140P	M16 Washer	16	
9	FA02050P	M16 Self-locking Nut	8	



DFPM002

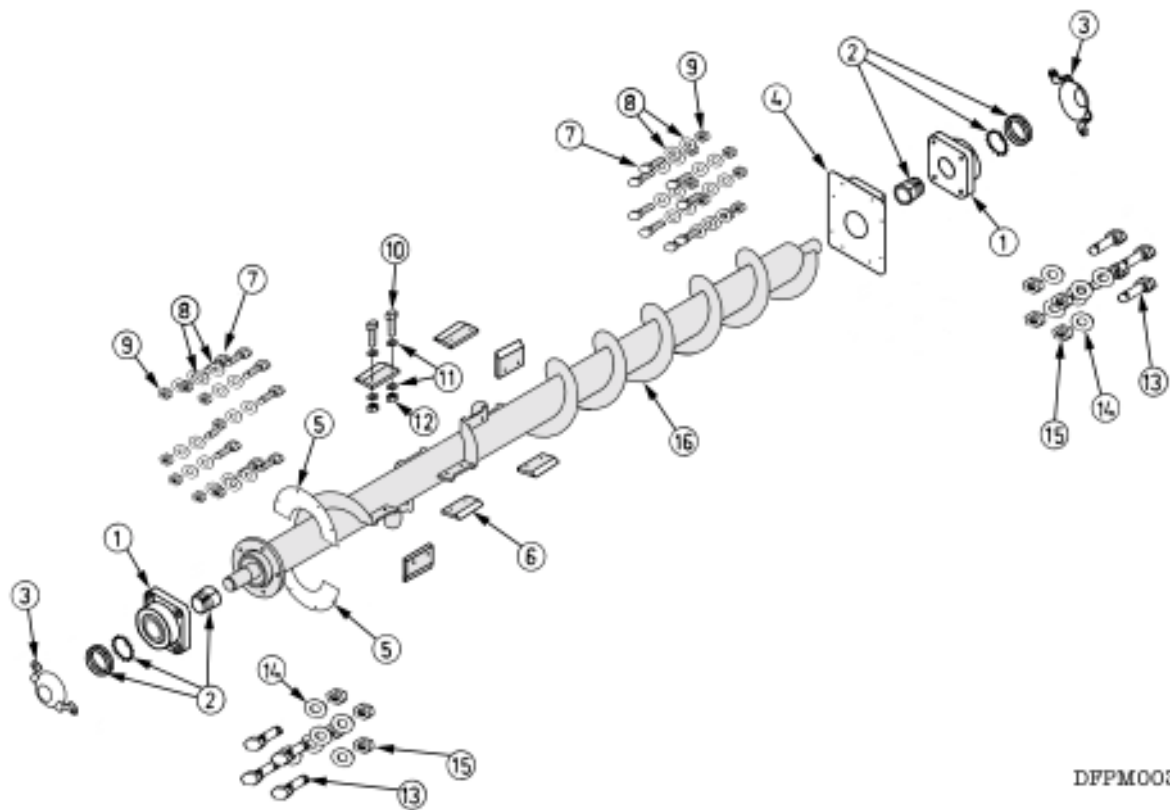
1.02 Paddle Rubbers

Item	Part Number	Description	Qty.	Notes
12m ³ Only				
1	7466706	Paddle Rubber 890 x 330 x 30mm	1	
2	742344	Backing Plate	1	
3	7466705	Paddle Rubber 1095 x 330 x 30	2	
4	742345	Backing Plate	2	
5	7466708	Paddle Rubber 610 x 330 x 30	1	
6	742343	Backing Plate	1	
16m ³ Only				
1	7466704	Paddle Rubber 1170 x 330 x 30	1	
2	746344	Backing Plate	1	
3	7466702	Paddle Rubber 1400 x 330 x 30	2	
4	746345	Backing Plate	2	
5	7466708	Paddle Rubber 610 x 330 x 30	1	
6	742343	Backing Plate	1	
20m ³ Only				
1&3	7466702	Paddle Rubber 1400 x 330 x 30	3	
2&4	746345	Backing Plate	3	
5	7466704	Paddle Rubber 1170 x 330 x 30	1	
6	746344	Backing Plate	1	



DFFPM002

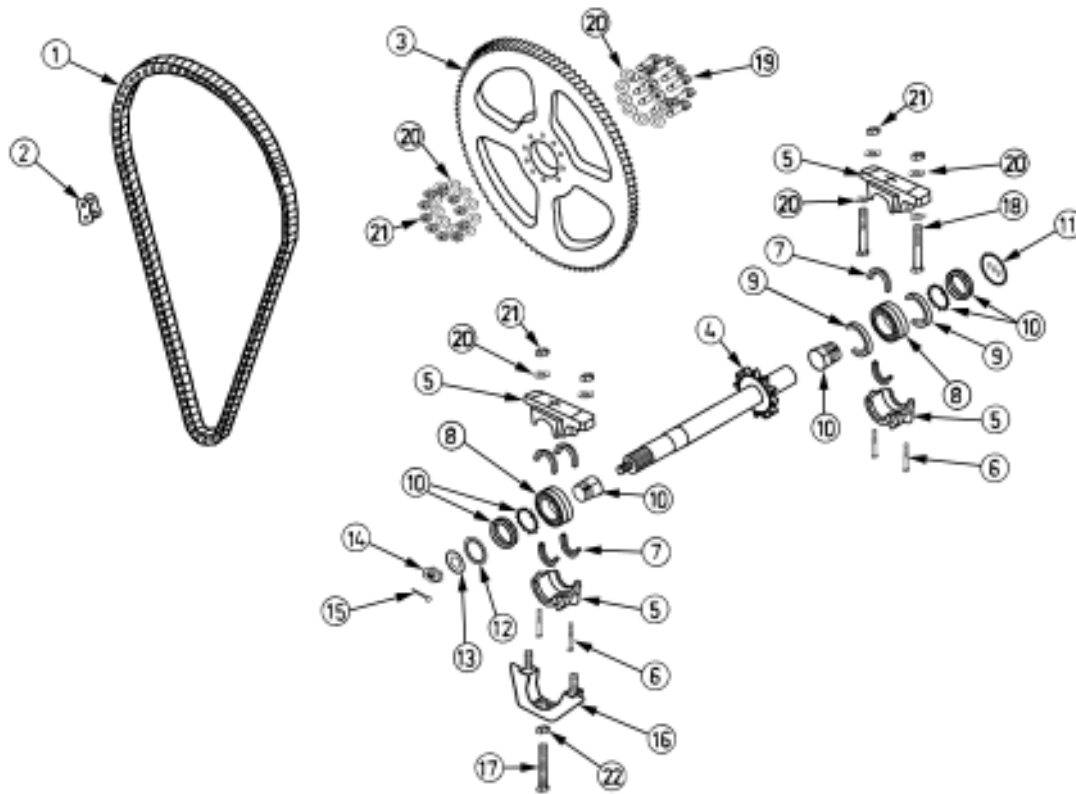
Item	Part Number	Description	Qty.	Notes
7	FA11290P	M12 x 160 Bolt		Quantity will vary with machine type
8	FA00130P	M12 Washer		
9	FA02040P	M12 Self-locking Nut		



DFFPM003

1.03 Auger Shaft Parts

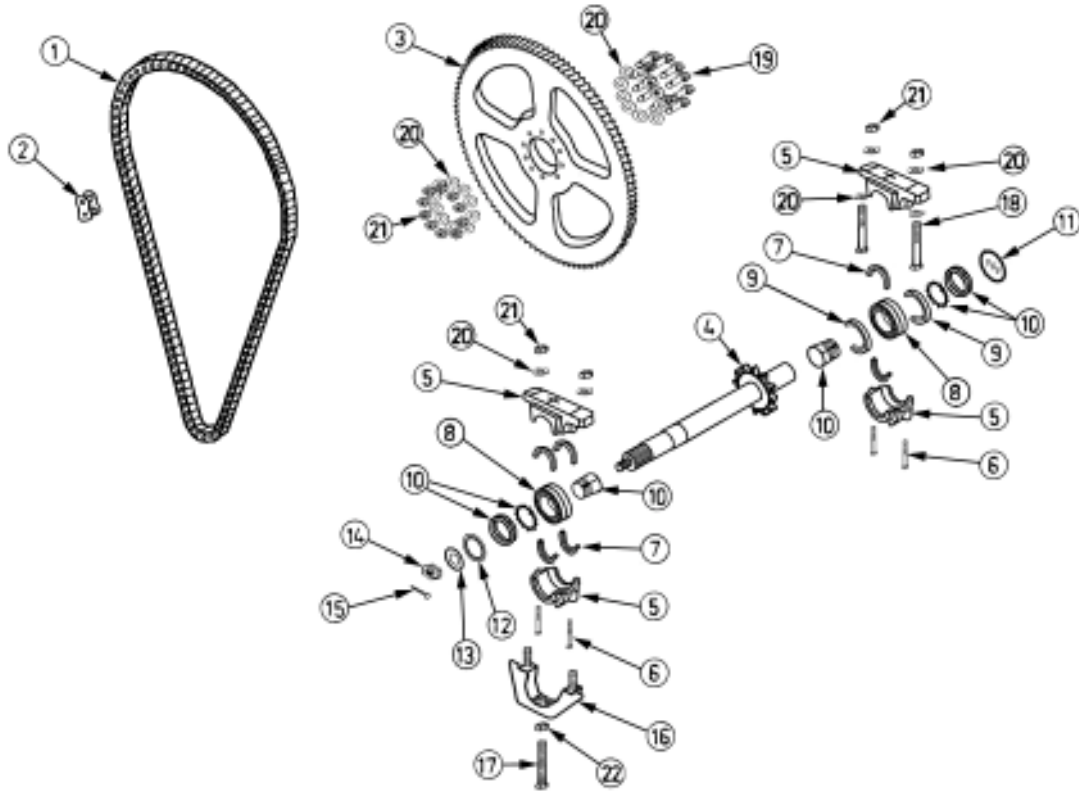
Item	Part Number	Description	Qty.	Notes
1	BGUKF313	4 Bolt Bearing	2	Bearing and housing are 1 part
2	BGH2313	Taper Lock Set	2	
3	742510	Auger Bearing Cover Plate Assembly	2	
4	742508	Auger Bearing Mount Assembly	1	
5	742280	Auger Drive Seal Plate	2	
6	1000841	Bolt On Auger Blade	6	140mm Long
7	FA11015P	M10 x 30 Bolt	32	
8	FA00110P	M10 Washer	64	
9	FA01030P	M10 Plain Nut	32	
10	FA11220	M12 x 40 Bolt	12	
11	FA00130P	M12 Washer	24	
12	FA02040P	M12 Self-locking Nut	12	
13	FA12015	M20 x 60 Bolt	8	
14	FA00150P	M20 Washer	12	
15	FA02060P	M20 Self-locking Nut	8	
16	742505	Auger Welded Assembly with Blades	1	12m ³
	746505	Auger Welded Assembly with Blades	1	16m ³
	748505	Auger Welded Assembly with Blades	1	20m ³



DFFPM004

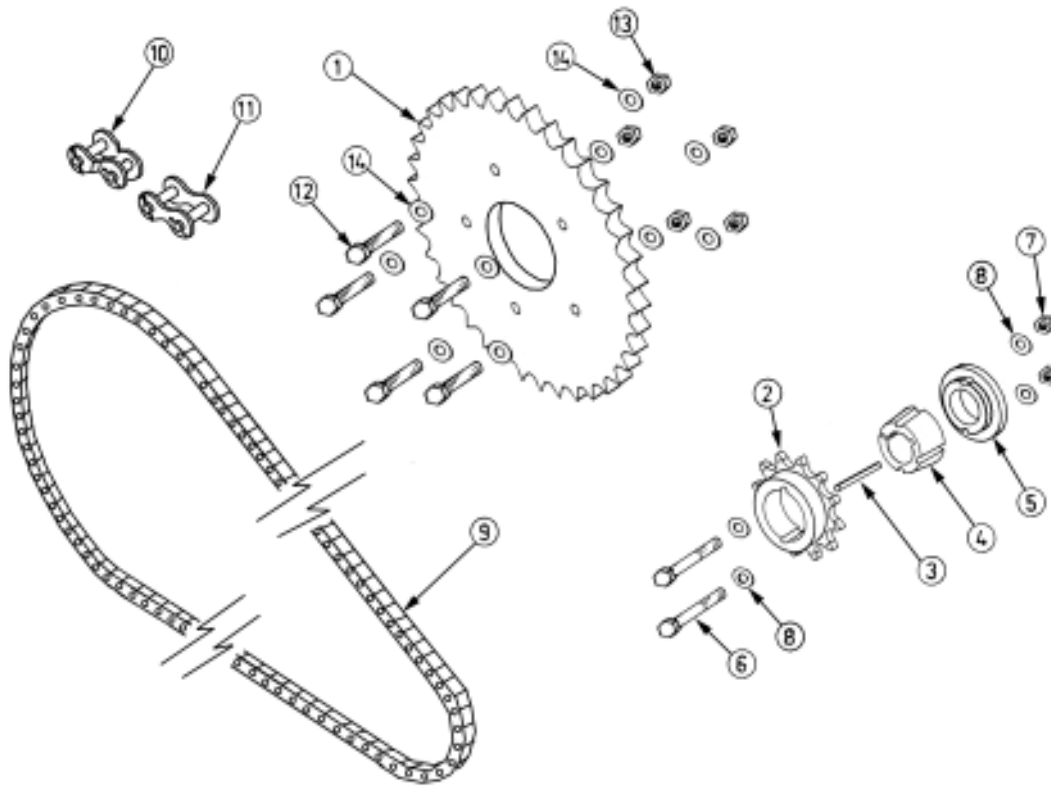
1.04 Rotar Drive Train

Item	Part Number	Description	Qty.	Notes
1	700615	2" Drive Chain	1	
2	700620	2" Connecting Link	1	
3	740300-01	103 Tooth 2" Sprocket	1	
4	7245255	Shaft	1	Fitted with Sprocket (Welded Assembly)
5	BGSNV150	Bearing Housing	1	75mm Bearing Housing (SKF)
6	FA11045P	M10 x 80 Bolt	4	
7	BGTSNA517	Housing Seal Set	2	
8	BG22217ESK	Roller Bearing	2	
9	BGFRM150-12-5	Fixing Ring	2	
10	BGH317	Taper Lock Set	2	
11	BGASNH511	Blank End Cap	1	
12	7006349	Fitting Shim	1	
13	724449	Front Washer	1	
14	FA01080	M30 Plain Nut	1	
15	FA17410	2" x 1/4" Split Pin	1	
16	734540	Bearing Support Cradle	1	
17	FA12036	M20 x 100 Set Screw	1	
18	FA12035	M20 X 100 Bolt	2	
19	FA12030	M20 x 90 Bolt	10	
20	FA00150P	M20 Washer	26	



DFPM004

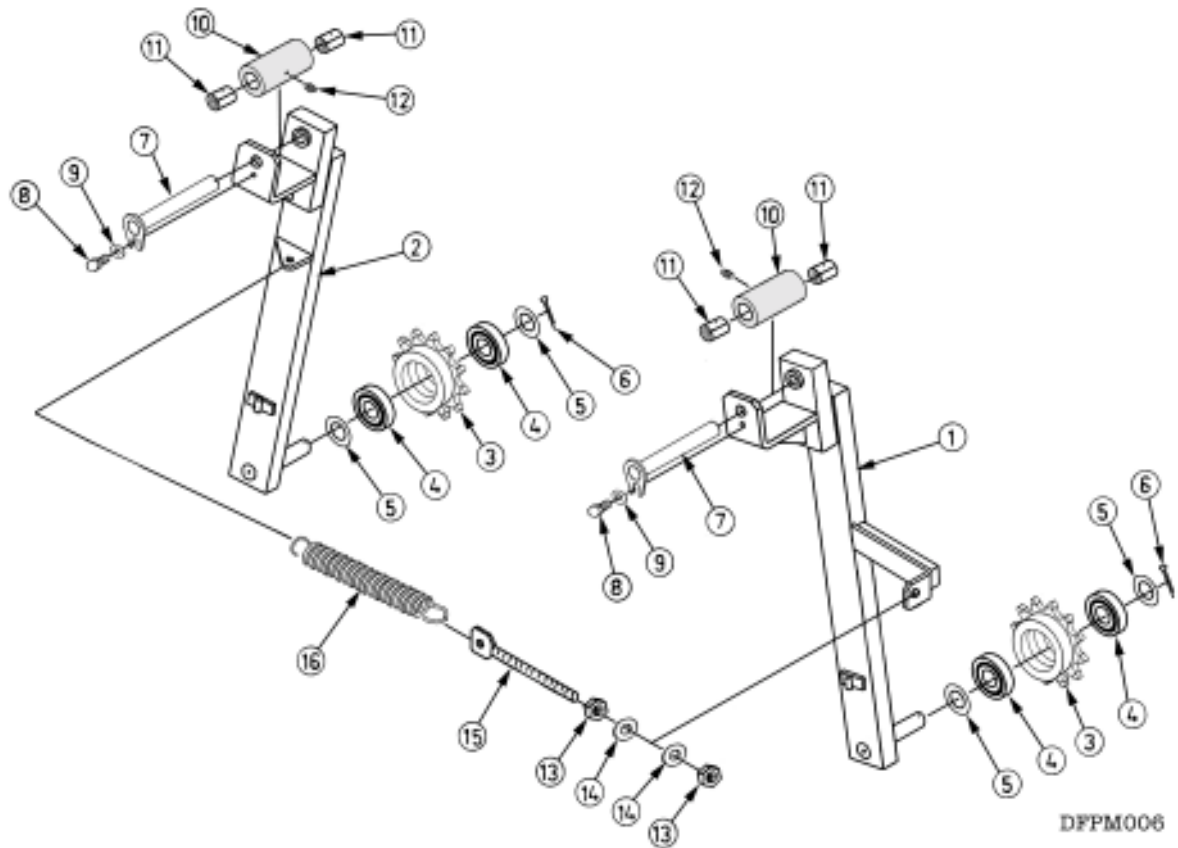
Item	Part Number	Description	Qty.	Notes
21	FA02060P	M20 Self Locking Nut	12	
22	FA01060	M20 Plain Nut	1	



DFFM006

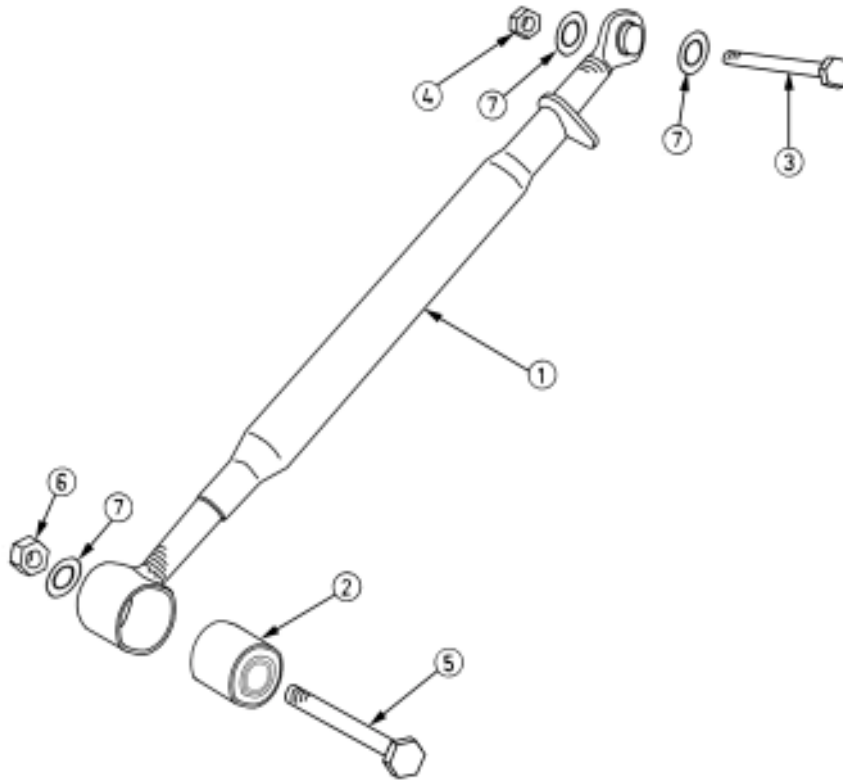
1.05 Auger Drive Train

Item	Part Number	Description	Qty.	Notes
1	74668870	38 Tooth Auger Sprocket	1	
2	724600	12 Tooth Gearbox Sprocket	1	
3	7006525	Key	1	12 x 8 x 30 mm
4	742610	Taper Locking Bush	1	
5	724448	Stepped Washer	1	
6	FA11045P	M10 x 80 Bolt	2	
7	FA02030P	M10 Self-locking Nut	2	
8	FA00100P	M10 Washer	4	
9	724603	1 1/4" Chain	1	
10	701612	1 1/4" Cranked Connecting Link	1	
11	700611	1 1/4" Connecting Link	1	
12	FA11635P	M16 x 70 Bolt	5	
13	FA02050P	M16 Self-locking Nut	5	
14	FA00140P	M16 Washer	10	



1.06 Jockey Arm Assembly

Item	Part Number	Description	Qty.	Notes
1	742529	RHS Jockey Arm Complete	1	
2	742527	LHS Jockey Arm Complete	1	
3	700635	12 Tooth Sprocket	2	
4	BG6207ZR	Bearing	4	
5	FA00200P	1 1/4" Washer	4	
6	FA17420	2 1/2" x 1/4" Split Pin	2	
7	742545	Pin	2	
8	FA11010P	M10 x 25 Bolt	2	
9	FA00110P	M10 Washer	2	
10	724411-01	Jockey Arm Bush Holder	2	Weld on, part of inner frame
11	7246070	1" ID Bush	4	
12	FA18110	M6 Grease Nipple	2	
13	FA01060	M20 Nut	2	
14	FA00150P	M20 Washer	2	
15	742545	Tensioner	1	
16	724645	Spring	1	3" x 12" x 3/8"



DFPM007

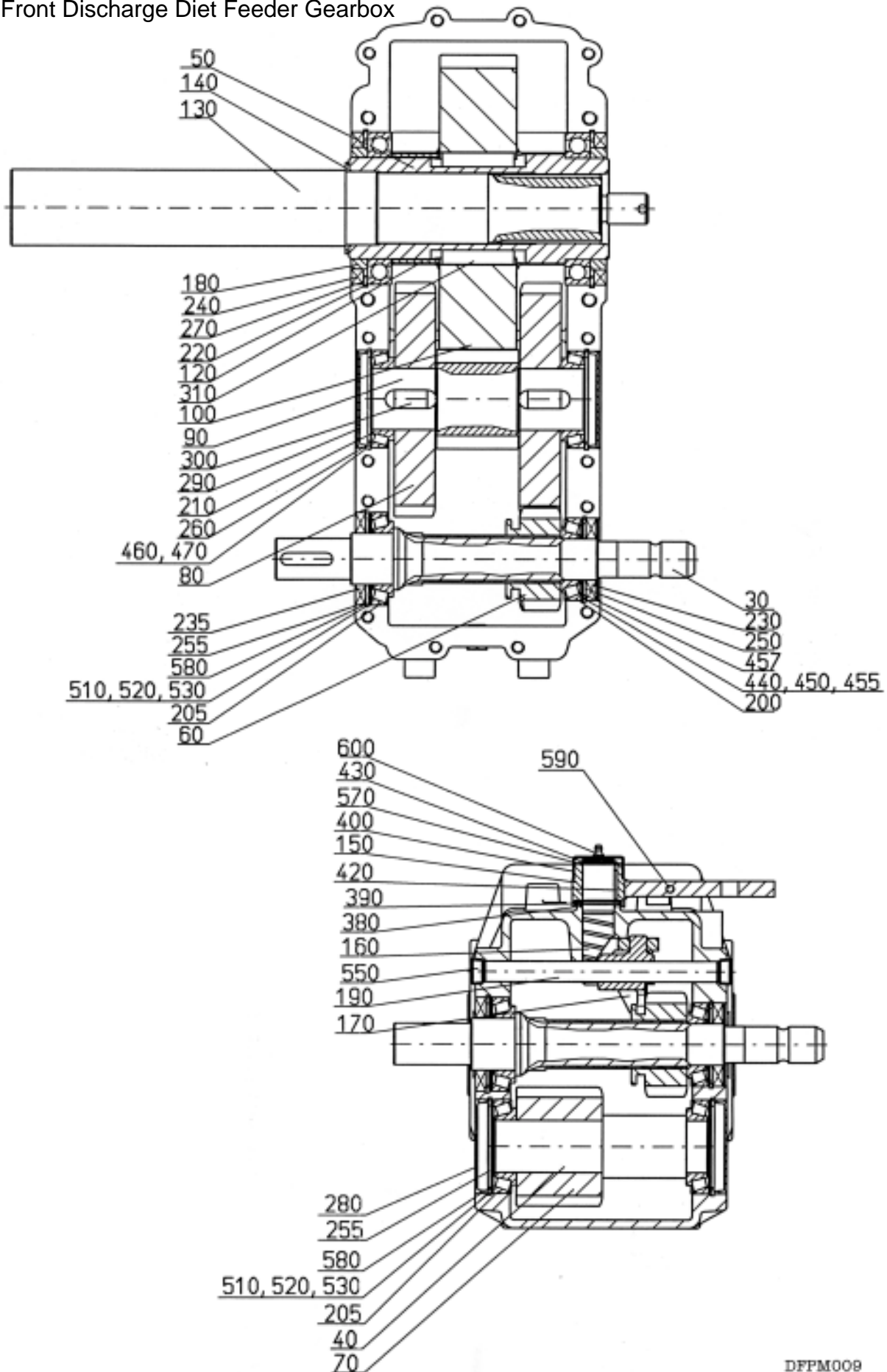
1.07 Auger Drive Tensioner

Item	Part Number	Description	Qty.	Notes
1	746604	20" Body CAT1 Top Link	1	
2	709685	Bushing	1	
3	FA08100	$\frac{3}{4}$ " x 6" UNF Bolt	1	
4	FA02270P	$\frac{3}{4}$ " UNF Nut	1	
5	FA12080	M20 X 180 Bolt	1	
6	FA02060P	M20 Self-locking Nut	1	
7	FA00150P	M20 Washer	3	

Normal Front Discharge Diet Feeder Gearbox

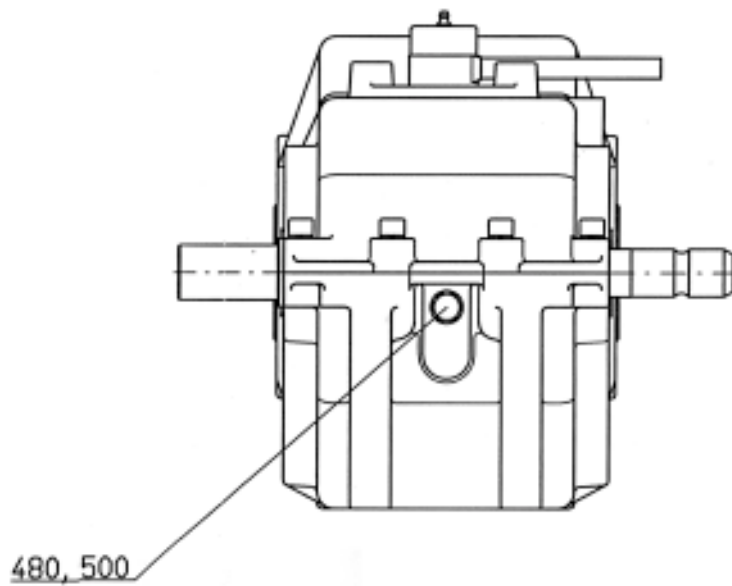
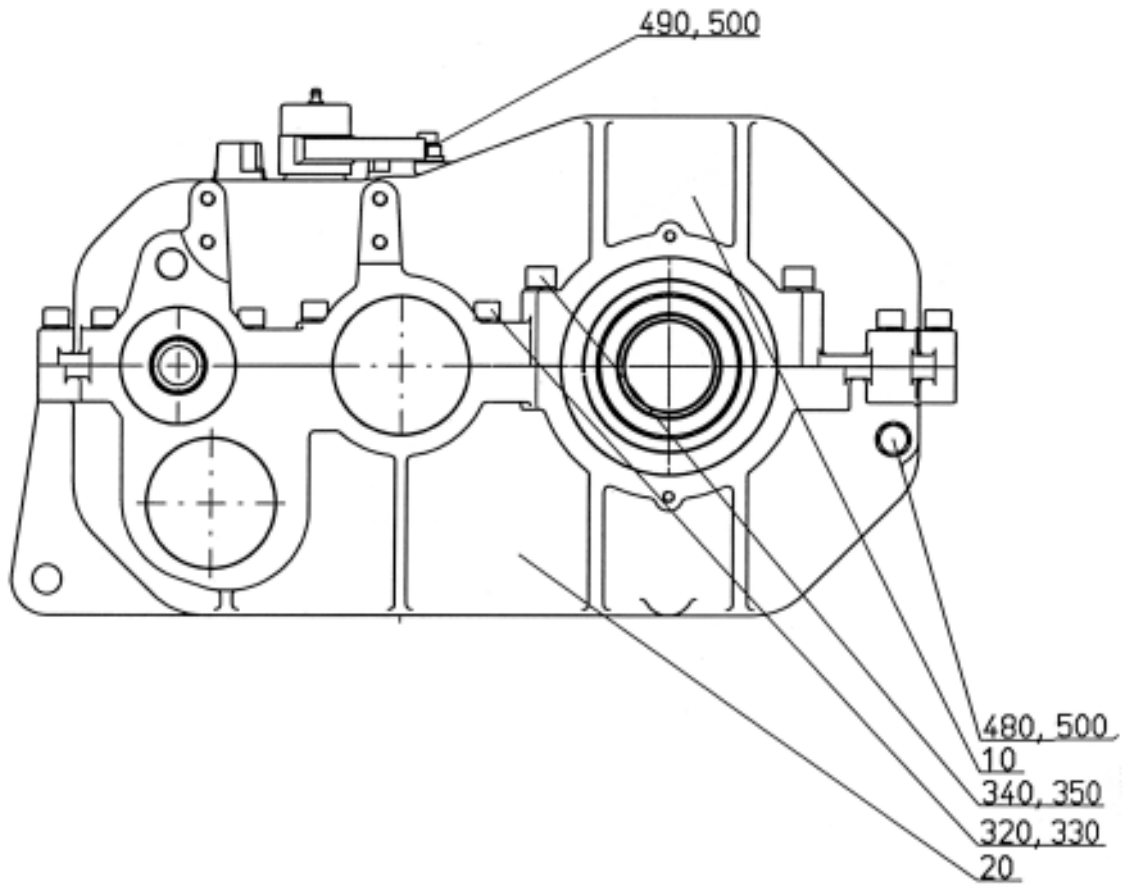
The following pages contain a series of illustrations showing gearbox parts. The first pages show enlarged views of the gearbox followed by a smaller summary view and the parts list.

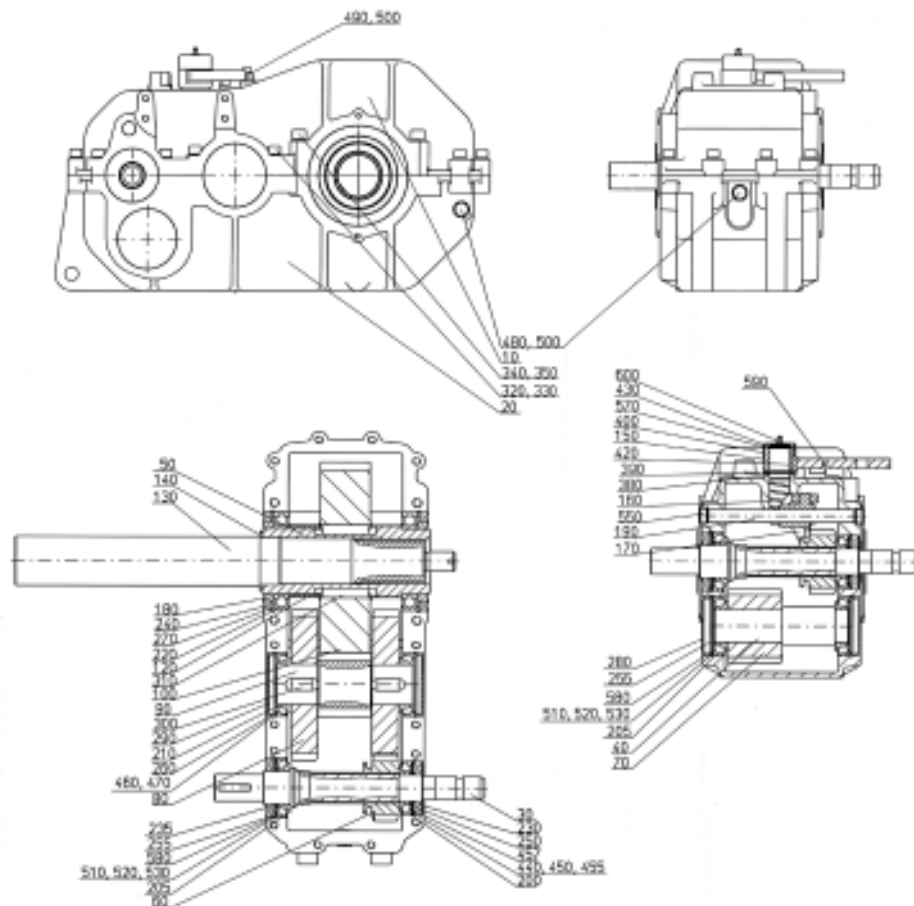
Front Discharge Diet Feeder Gearbox



DFPM008

Front Discharge Diet Feeder Gearbox





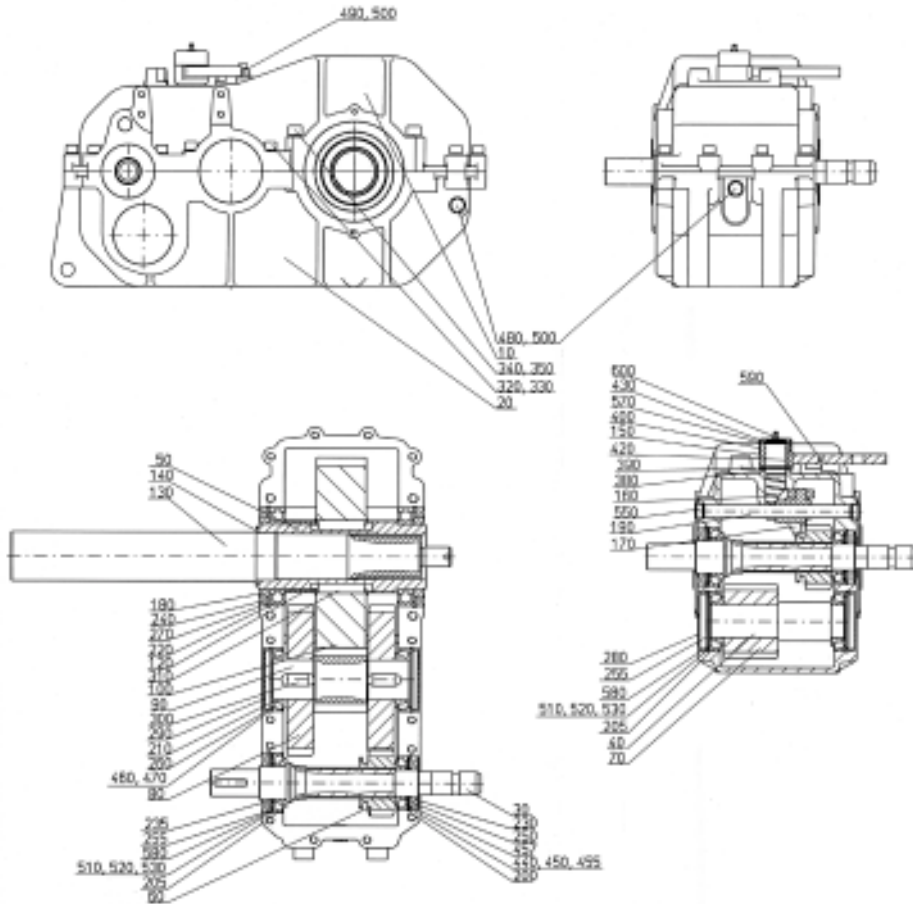
DFFM011

1.08 Front Discharge Diet Feeder Gearbox

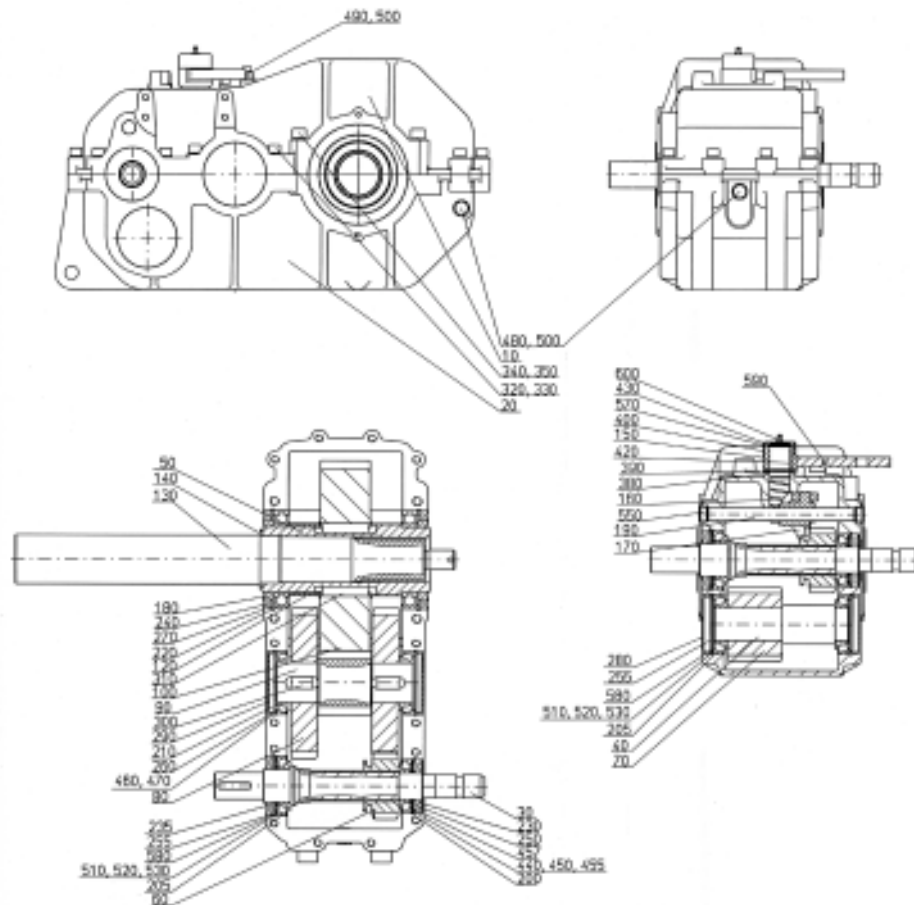
Item	Part Number	Description	Qty.	Notes
10	8017350	Housing	1	
30	8017013	Input Shaft	1	
40	8017352	Shaft	1	
50	8017016	Hollow Shaft	1	
60	8017356	Shifting Gear	1	
70	8017357	Spur Gear	1	
80	8017358	Spur Gear	2	
90	8017024	Pinion Sleeve	1	
100	8017026	Spur Gear	1	
120	8017030	Bushing	1	
130	8017362	Shaft	1	
140	8017034	Supporting Plate	1	
150	8017318	Shifting Lever	1	
160	8017365	Shifting Lever	1	
170	8017322	Shifting Fork	1	
180	8017042	Bushing	2	
190	8017368	Shaft	1	
200	BG30208	Bearing	1	
205	BG30210	Bearing	3	
210	BG32012	Bearing	2	

Vari Cut Diet Feeder

Section No. 1



Item	Part Number	Description	Qty.	Notes
220	BG6020	Bearing	2	
230	8017050	Radial Shaft Seal	1	40 x 80 x 10
235	8017292	Radial Shaft Seal	1	50 x 90 x 10
240	8017052	Radial Shaft Seal	2	120 x 150 x 12
250	8017054	Retaining Ring	1	80 x 2.5
255	8017377	Retaining Ring	3	90 x 3
260	8017056	Retaining Ring	2	95 x 3
270	8017058	Retaining Ring	2	150 x 4
280	8017294	Plug	2	90 x 12
290	8017062	Plug	2	95 x 10
300	8017064	Shim	2	18 x 11 x 32
310	8017066	Shim	2	22 x 14 x 70
320	FA11227	Screw Plug	14	M12 x 50
330	FA00310	Spring Ring	14	
340	FA11440	Screw Plug	4	
350	8017388	Spring Ring	4	
380	8017389	"O" Ring	1	
390	8017390	Supporting Plate	1	30 x 42 x 2.5
400	8017391	Screw Plug	1	
420	8017392	Shaft Key	1	8 x 7 x 28



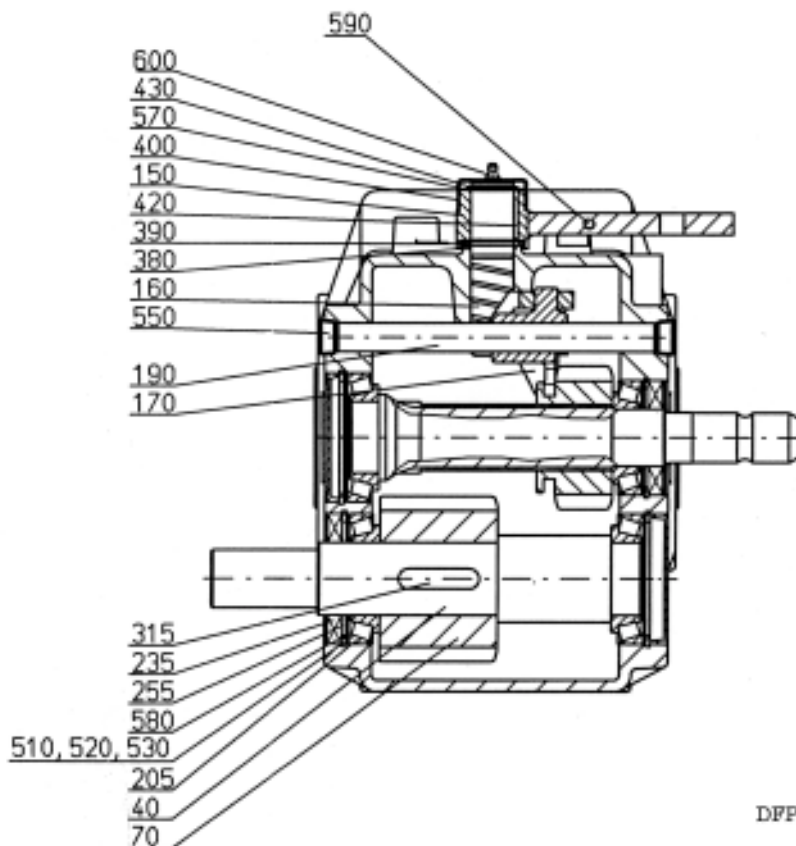
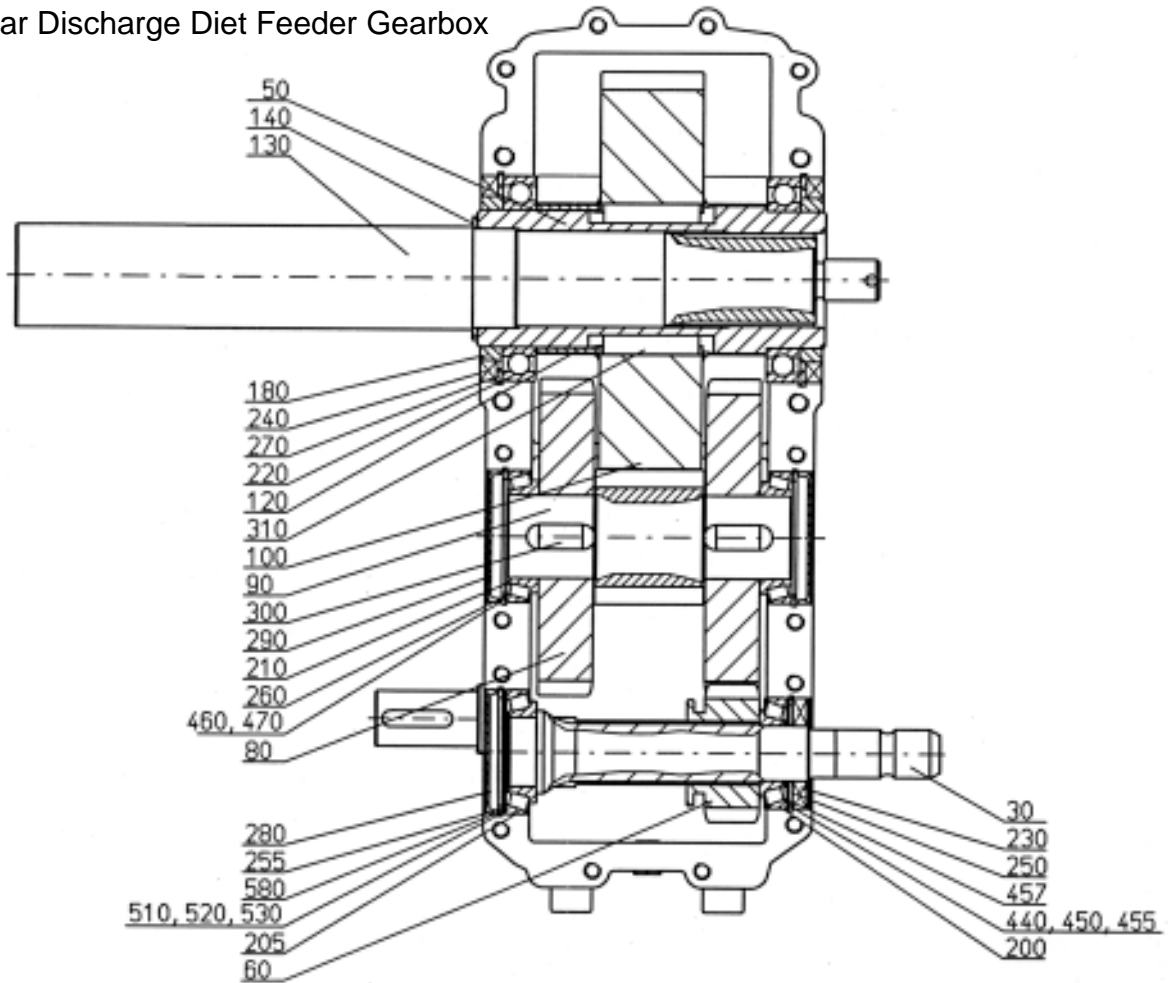
DFFM011

Item	Part Number	Description	Qty.	Notes
430	8017393	Retaining Ring	2	30 x 1.5
440	8017092	Shim	1	63 x 80 x 0.3
450	8017094	Shim	2	63 x 80 x 0.1
455	8017095	Shim	1	63 x 80 x 0.5
457	80170955	Shim	1	63 x 80 x 1
460	8017096	Shim	2	75 x 95 x 0.3
470	8017098	Shim	6	75 x 95 x 0.1
480	8017100	Screw Plug	2	
490	8017102	Breather	1	
500	8017403	Seal	3	
510	8017404	Shim	3	70 x 90 x 0.5
520	8017405	Shim	3	70 x 90 x 0.3
530	8017326	Shim	6	70 x 90 x 0.1
550	8017407	Screw Plug	2	
570	8017328	Shim	1	30 x 42 x 1
580	8017330	Shim	4	70 x 90 x 1
590	8017410	Screw Pin	2	M8 x 12
600	8017411	Lubrication Nipple	1	
	7246817	M11 Gearbox Complete		

Rear Discharge Diet Feeder Gearbox

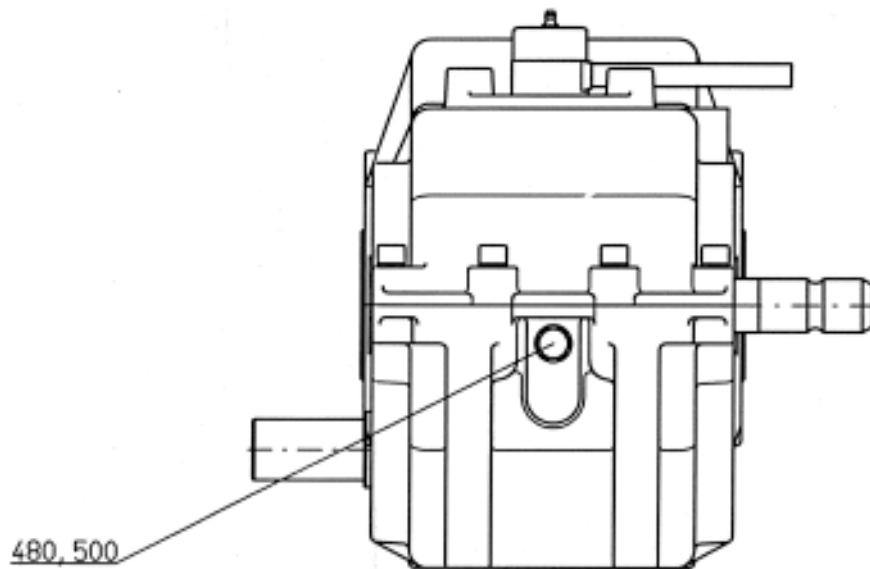
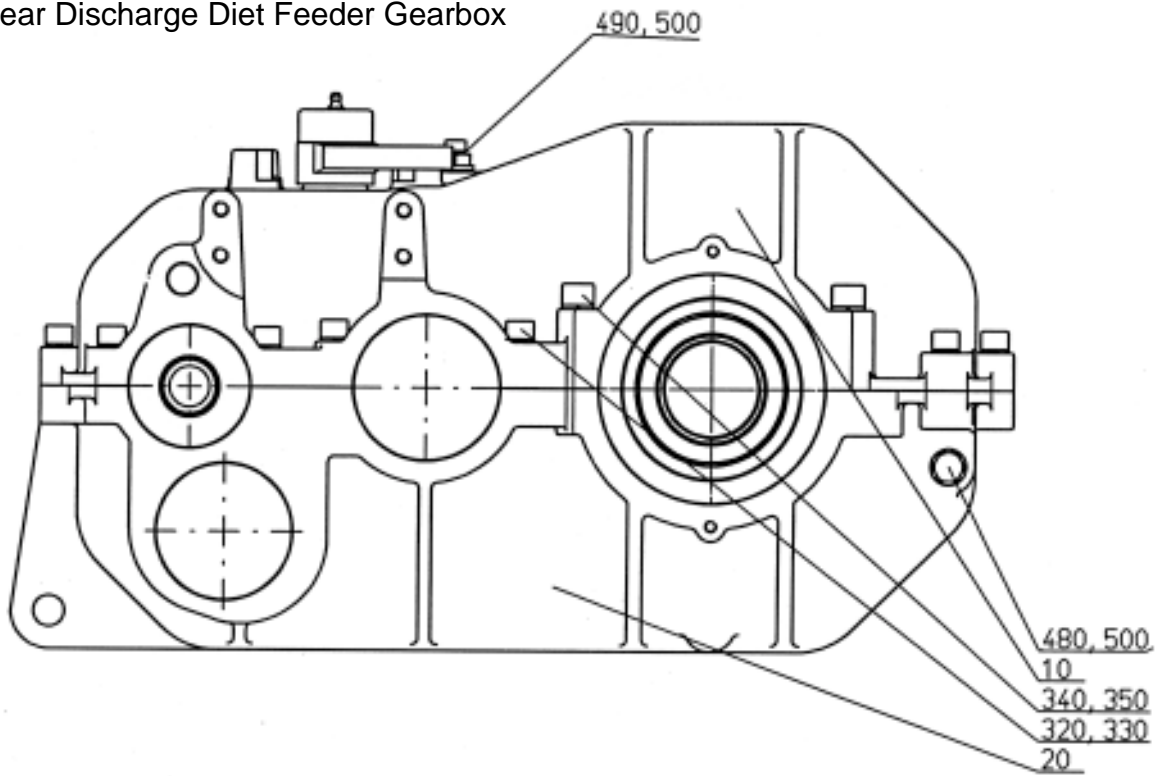
The following pages contain a series of illustrations showing gearbox parts. The first pages show enlarged views of the gearbox followed by a smaller summary view and the parts list.

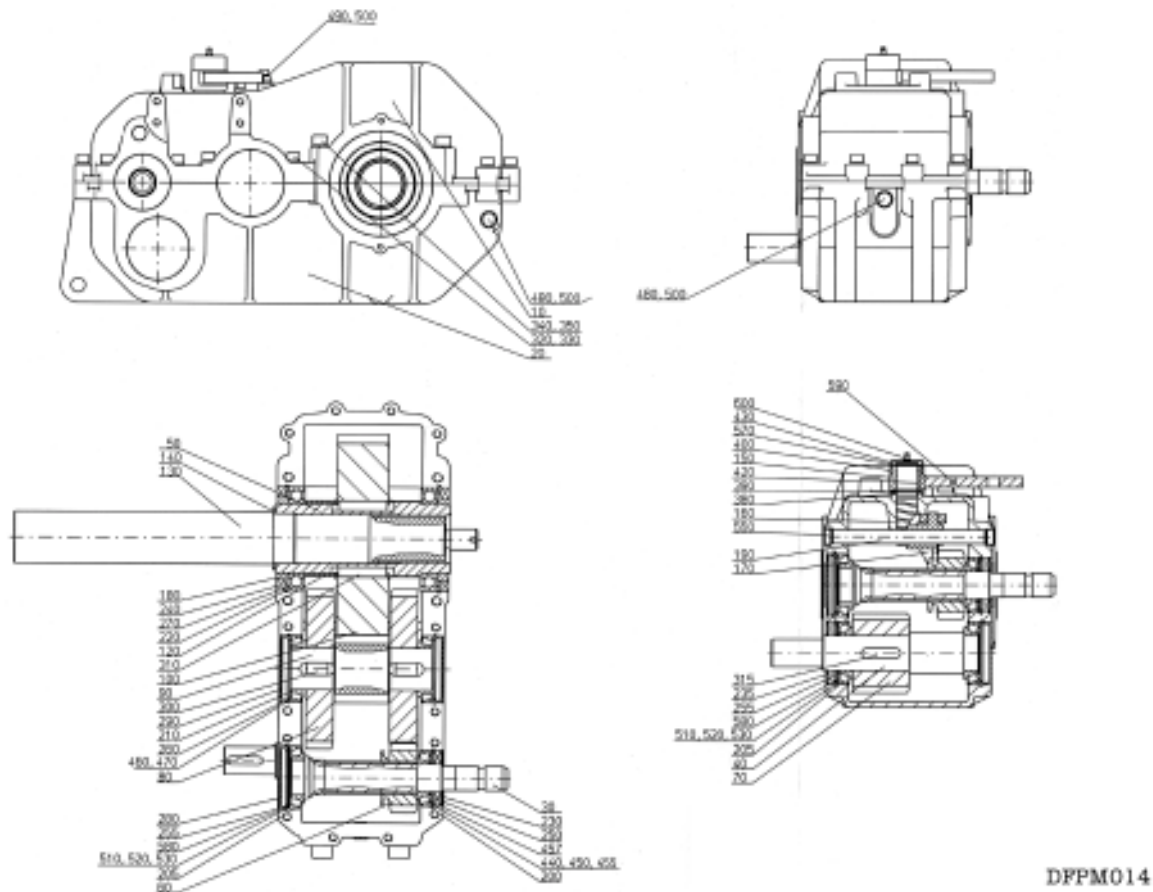
Rear Discharge Diet Feeder Gearbox



DPPM013

Rear Discharge Diet Feeder Gearbox

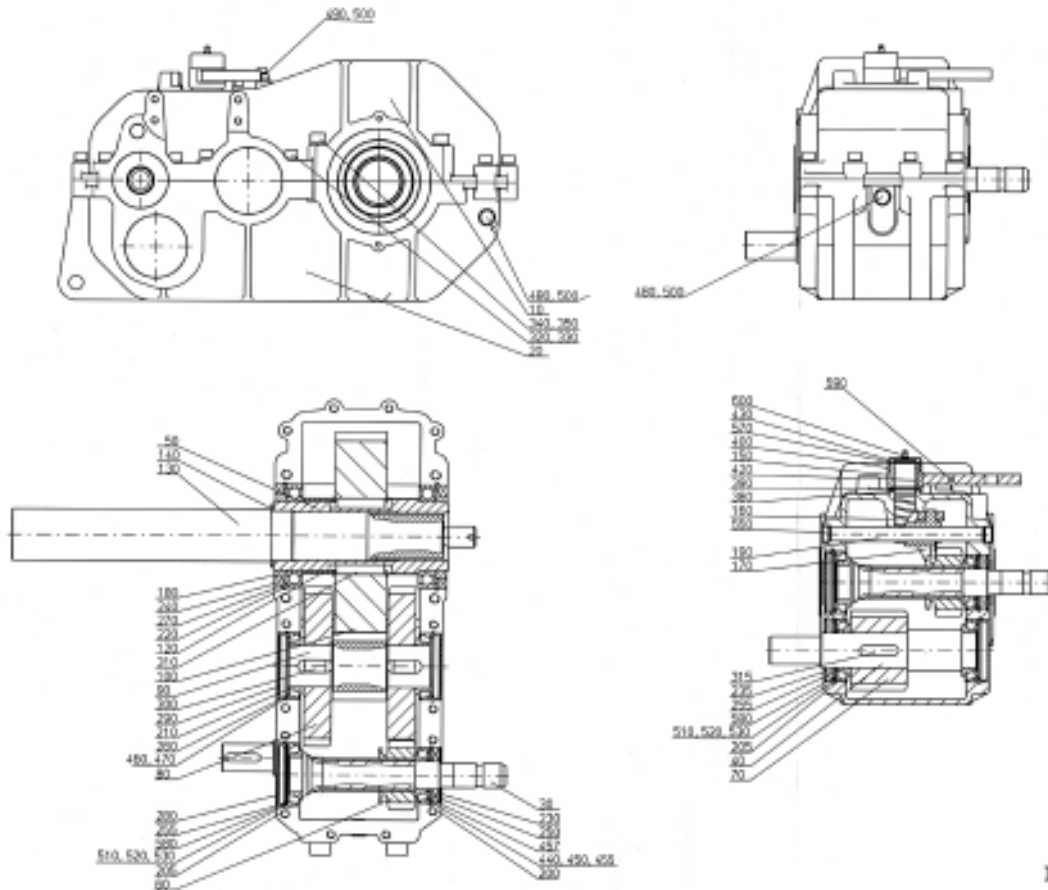




DFPM014

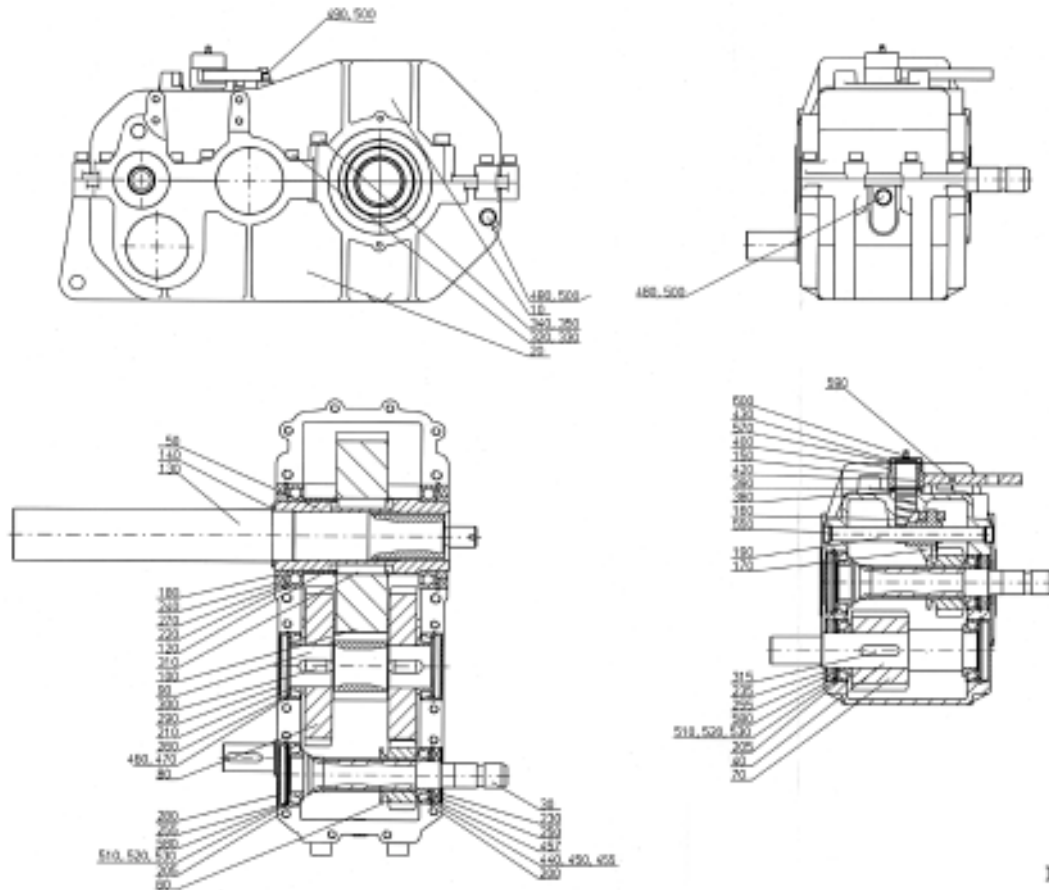
1.09 Rear Discharge Diet Feeder Gearbox

Item	Part Number	Description	Qty.	Notes
10	8017350	Housing	1	
30	8017353	Input Shaft	1	
40	8017354	Shaft	1	
50	8017016	Hollow Shaft	1	
60	8017356	Shifting Gear	1	
70	8017357	Spur Gear	1	
80	8017358	Spur Gear	2	
90	8017024	Pinion Sleeve	1	
100	8017026	Spur Gear	1	
120	8017030	Bushing	1	
130	8017362	Shaft	1	
140	8017034	Supporting Plate	1	
150	8017318	Shifting Lever	1	
160	8017365	Shifting Lever	1	
170	8017322	Shifting Fork	1	
180	8017042	Bushing	2	
190	8017368	Shaft	1	
200	BG30208	Bearing	1	
205	BG30210	Bearing	3	
210	BG32012	Bearing	2	

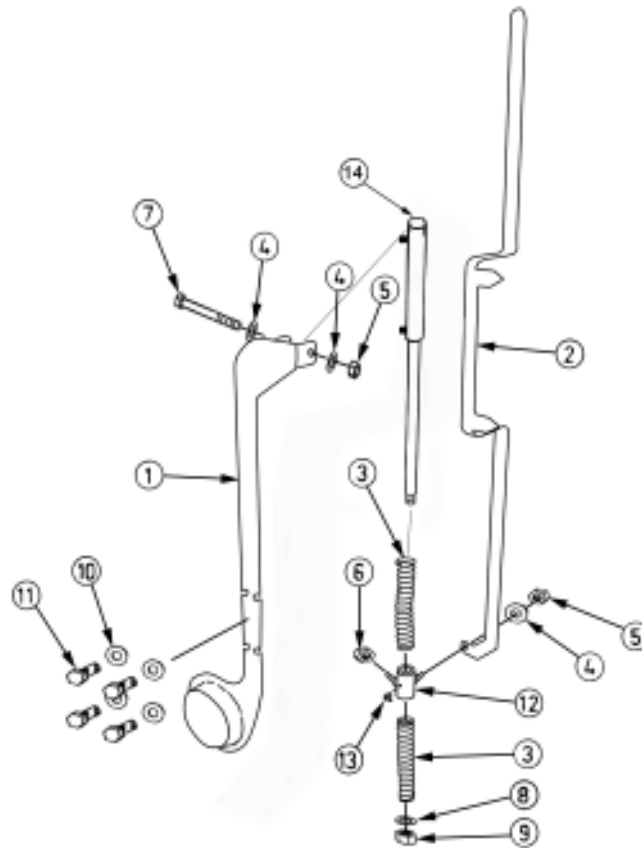


DFPM014

Item	Part Number	Description	Qty.	Notes
220	BG6020	Bearing	2	
230	8017050	Radial Shaft Seal	1	40 x 80 x 10
235	8017292	Radial Shaft Seal	1	50 x 90 x 10
240	8017052	Radial Shaft Seal	2	120 x 150 x 12
250	8017054	Retaining Ring	1	80 x 2.5
255	8017377	Retaining Ring	3	90 x 3
260	8017056	Retaining Ring	2	95 x 3
270	8017058	Retaining Ring	2	150 x 4
280	8017381	Plug	2	90 x 8
290	8017062	Plug	2	95 x 10
300	8017064	Shim	2	18 x 11 x 32
310	8017066	Shim	2	22 x 14 x 70
315	8017394	Shim	1	14 x 9 x 56
320	FA11227	Screw Plug	14	M12 x 50
330	FA00310	Spring Ring	14	
340	FA11440	Screw Plug	4	
350	8017388	Spring Ring	4	
380	8017389	"O" Ring	1	
390	8017390	Supporting Plate	1	30 x 42 x 2.5
400	8017391	Screw Plug	1	
420	8017392	Shaft Key	1	8 x 7 x 28



Item	Part Number	Description	Qty.	Notes
430	8017393	Retaining Ring	2	30 x 1.5
440	8017092	Shim	1	63 x 80 x 0.3
450	8017094	Shim	2	63 x 80 x 0.1
455	8017095	Shim	1	63 x 80 x 0.5
457	80170995	Shim	1	63 x 80 x 1
460	8017096	Shim	2	75 x 95 x 0.3
470	8017098	Shim	6	75 x 95 x 0.1
480	8017100	Screw Plug	2	
490	8017102	Breather	1	
500	8017403	Seal	3	
510	8017404	Shim	3	70 x 90 x 0.5
520	8017405	Shim	3	70 x 90 x 0.3
530	8017326	Shim	6	70 x 90 x 0.1
550	8017407	Screw Plug	2	
570	8017328	Shim	1	30 x 42 x 1
580	8017330	Shim	4	70 x 90 x 1
590	8017410	Screw Pin	2	M8 x 12
600	8017411	Lubrication Nipple	1	
	7246818	M12 Gearbox Complete		



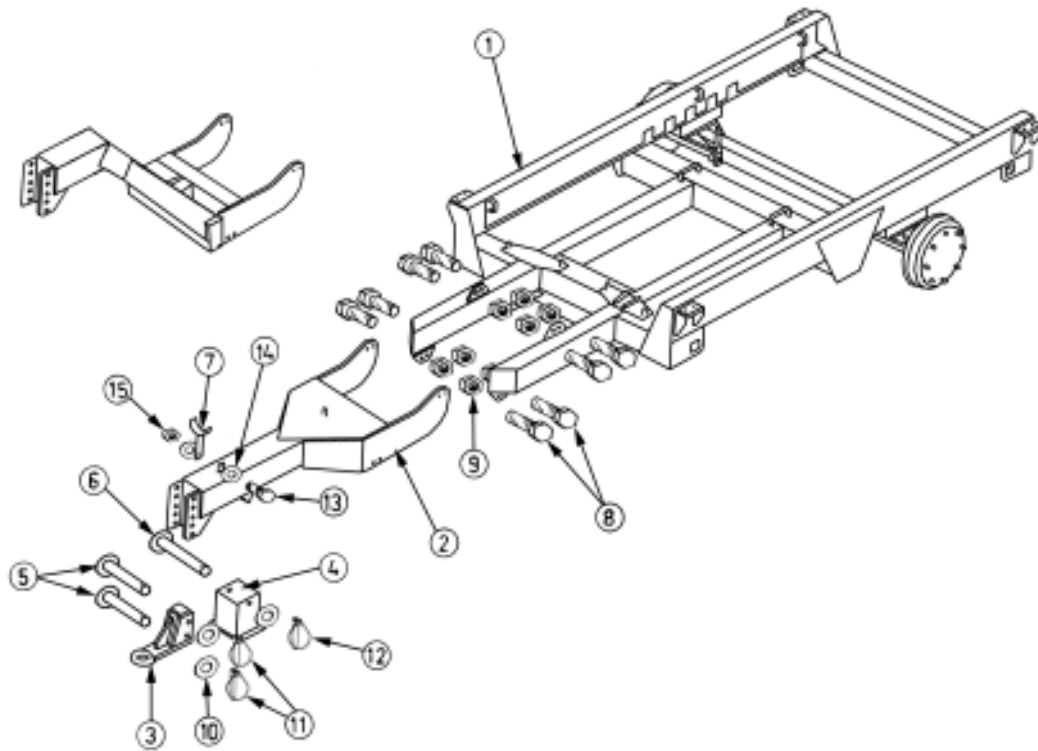
DFPM021

1.10 Change-Over Mechanism

Item	Part Number	Description	Qty.	Notes
1	734560-03	Change-Over Ram Bracket	1	
2	7246803	Indicator Bar	1	
3	7246806	Spring	2	Type 2
4	FA00110P	M10 Washer	1	
5	FA02030P	M10 Self-locking Nut	1	
6	FA01030P	M10 Plain Nut	1	
7	FA11245	M12 x 90 Bolt	1	
8	FA00140P	M16 Washer	1	
9	FA02050P	M16 Self-locking Nut	1	
10	FA00110P	M10 Washer	4	
11	FA11025P	M10 x 40 Bolt	4	
12	7345615	Indicator Sliding Bush	1	
13	FA18140	M8 x 90 Grease Nipple	1	
14	HC70045	Type 2 Gear change Hydraulic Cylinder	1	
	HC870045	Seal Kit for Type 2 Gear Change hydraulic cylinder	1	

Chassis and Body

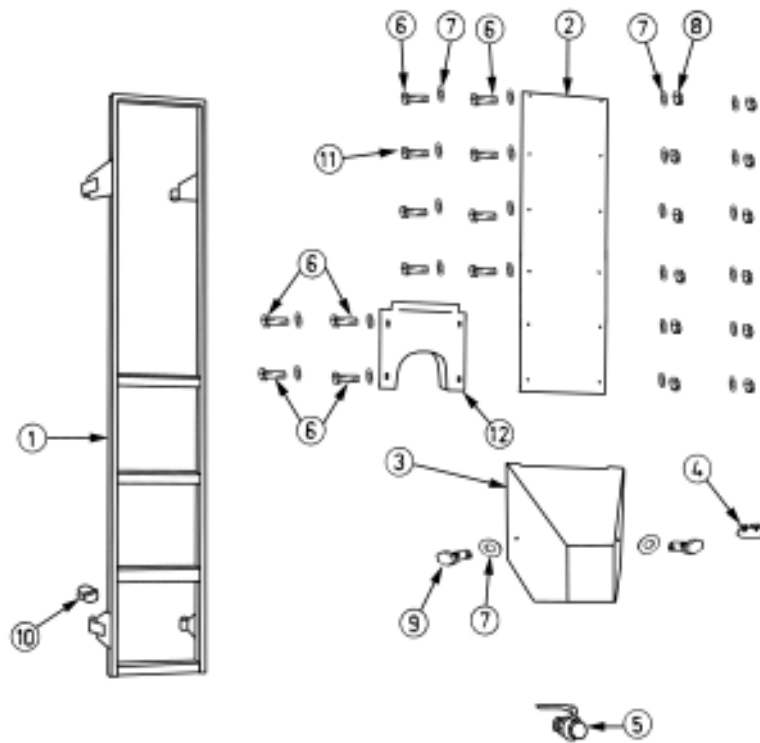
Chassis and Body	27
2.01 Bottom Chassis	28
2.02 Rear Covers and Fittings	29
2.03 Front Outer Panels	30
2.04 Front Inner Frame	32
2.05 Front Closing Plates	33
2.06 Blades and Holders	34
2.07 Sprung Bar Assembly	35
2.08 Auger Cover	36
2.09 Dispenser Door	37



DPPM018

2.01 Bottom Chassis

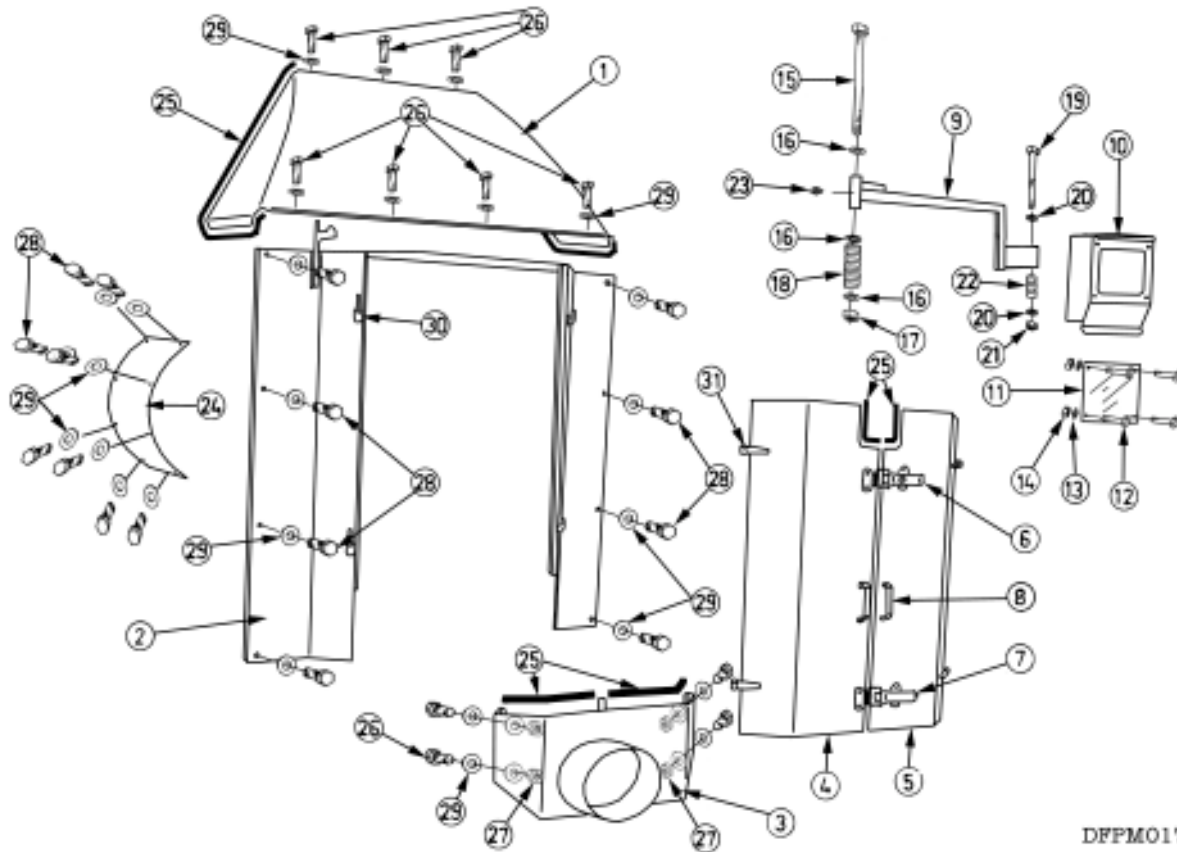
Item	Part Number	Description	Qty.	Notes
1	742518	Bottom Chassis	1	12m ³
1	746518	Bottom Chassis	1	16m ³
1	748518	Bottom Chassis	1	18m ³
2	734545-02	Low Drawbar	1	
2	734548	German Style High Drawbar	1	Alternative Option
3	700569-00	Drawbar Towing Hitch	1	
4	700532-00	Drawbar Stool	1	
5	700569-00	Towing Hitch Pin	2	
6	700561-02	Drawbar Stool Pin	1	
7	700568-00	P.T.O. Stand	1	
8	FA12015	M20 x 60 Bolt	8	
9	FA02060P	M20 Self-locking Nut	8	
10	FA00170	1" Washer	3	
11	FA17210	1/4" Lynch Pin	2	
12	FA17230	7/16" Lynch Pin	1	
13	FA11015P	M10 x 30 Bolt	1	
14	FA00110P	M10 Washer	1	
15	FA02030P	M10 Self-locking Nut	1	



DFFPM016

2.02 Rear Covers and Fittings

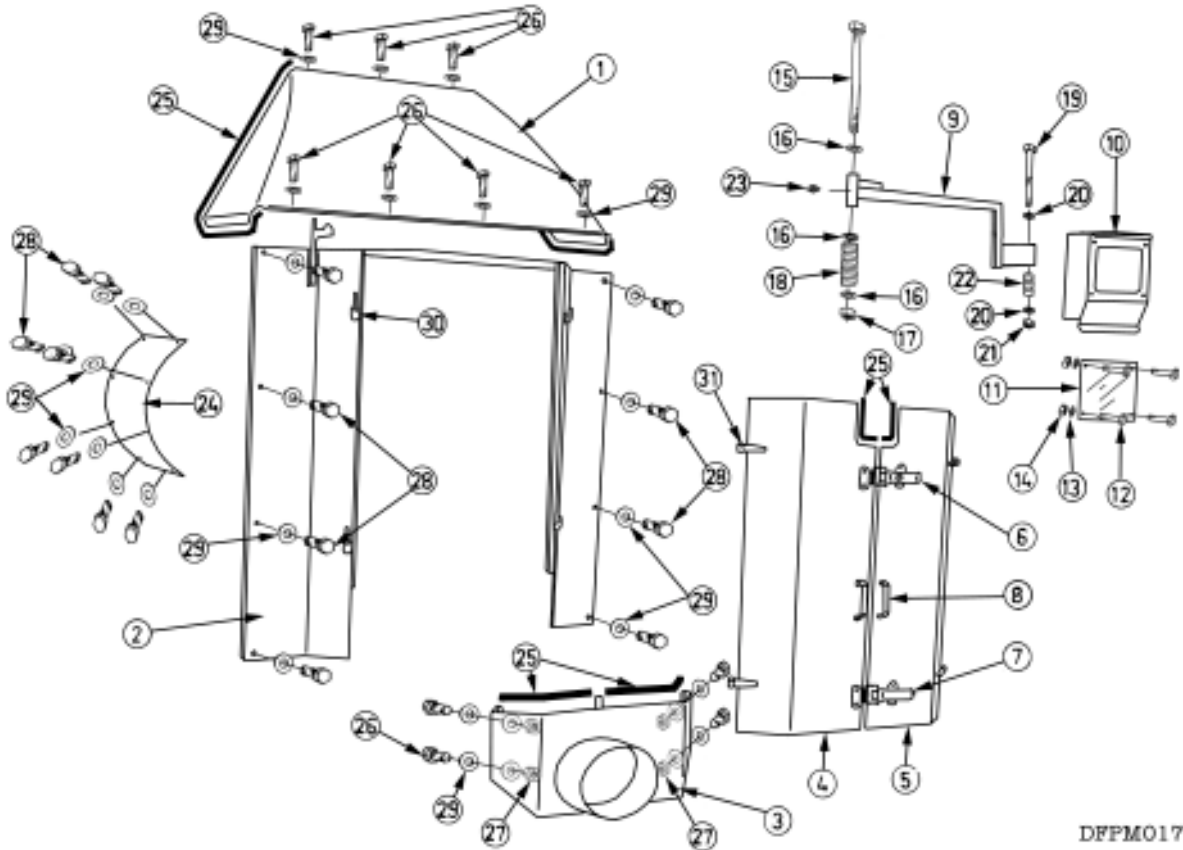
Item	Part Number	Description	Qty.	Notes
1	742543	Ladder	1	
2	700102	Cover Plate	1	
3	724464	Bearing Cover	1	
4	72446	5" Pipe Cover Flap	1	
5	700670	2" BSP Ball Valve	1	
	700671	2" Male - Male Adapter	1	
6	FA11020	M10 x 35 Bolt	6	
7	FA00110P	M10 Washer	26	
8	FA02030P	M10 Self-locking Nut	12	
9	FA11008	M10 x 20 Bolt	2	
10	FA17210	1/4" Lynch Pin	1	
11	FA11015P	M10 x 30 Bolt	2	
12	700547	Rotor Closing Panel	1	40mm Lip



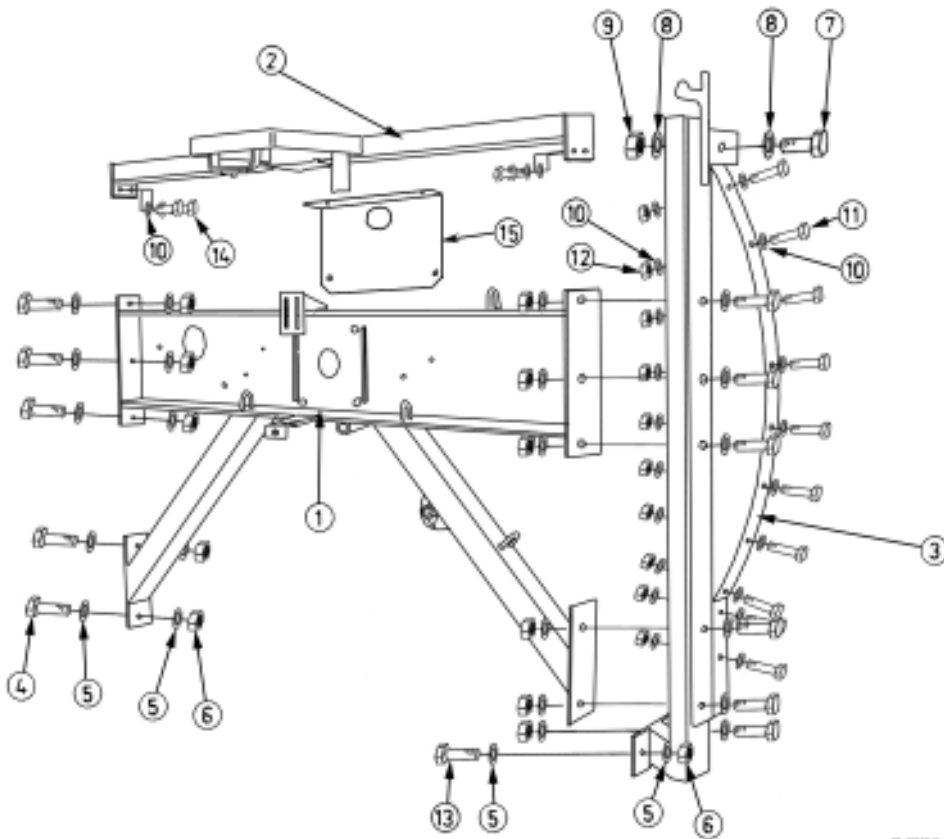
DFPM017

2.03 Front Outer Panels

Item	Part Number	Description	Qty.	Notes
1	734550	Top Cover	1	
2	7425448	Front Cover Assembly	1	
3	7425443	P.T.O. Guard	1	
4	7425441	RHS Door	1	
5	7425440	LHS Door	1	
6	7246052	Locking Spring Latch	1	Fits using items 12,13,14
7	7246050	Spring Latch	1	Fits using items 12,13,14
8	700666	Handle	2	Fits using items 28,29
9	742552	Display Swing Arm Assyembly	1	
10	734553	Display Box	1	
11	7246880	Display Box Perspex	1	
12	FA10510	M5 x 16 Bolt	4	Stainless Steel
13	FA00006	M5 Washer	4	
14	FA02005	M5 Self-locking Nut	4	
15	7425521	M20 Threaded Bar Assembly	1	
16	FA00150P	M20 Washer	3	
17	FA02060P	M20 Self-locking Nut	1	
18	7246470	Spring	1	
19	FA11275P	M12 x 140 Bolt	1	
20	FA00130P	M12 Washer	2	



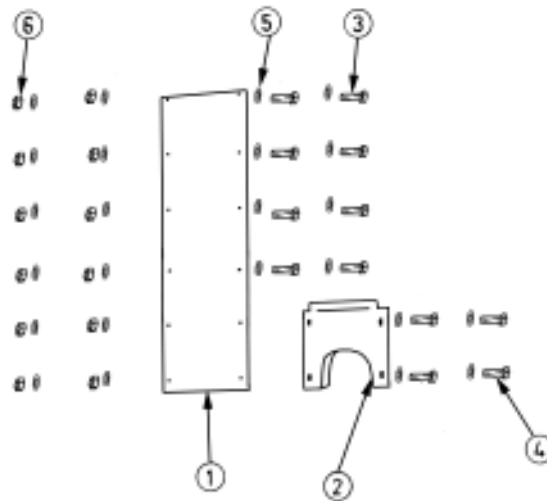
Item	Part Number	Description	Qty.	Notes
21	FA02040P	M12 Self-locking Nut	1	
22	724646	Spring	1	
23	FA18120	M8 Straight Grease Nipple	1	
24	7421525	Auger Access Cover	1	
25	7246840	Press-On Edge Seal	1	Per Meter, Use as Required
26	FA10830P	M8 x 30 Bolt	11	
27	FA02020P	M8 Self-locking Nut	4	
28	FA10805	M8 x 16 Bolt	16	
29	FA00100P	M8 Washer	31	
30	7246830	11mm Chime Hook	4	
31	7246832	11mm Hinge	4	



DFPM008

2.04 Front Inner Frame

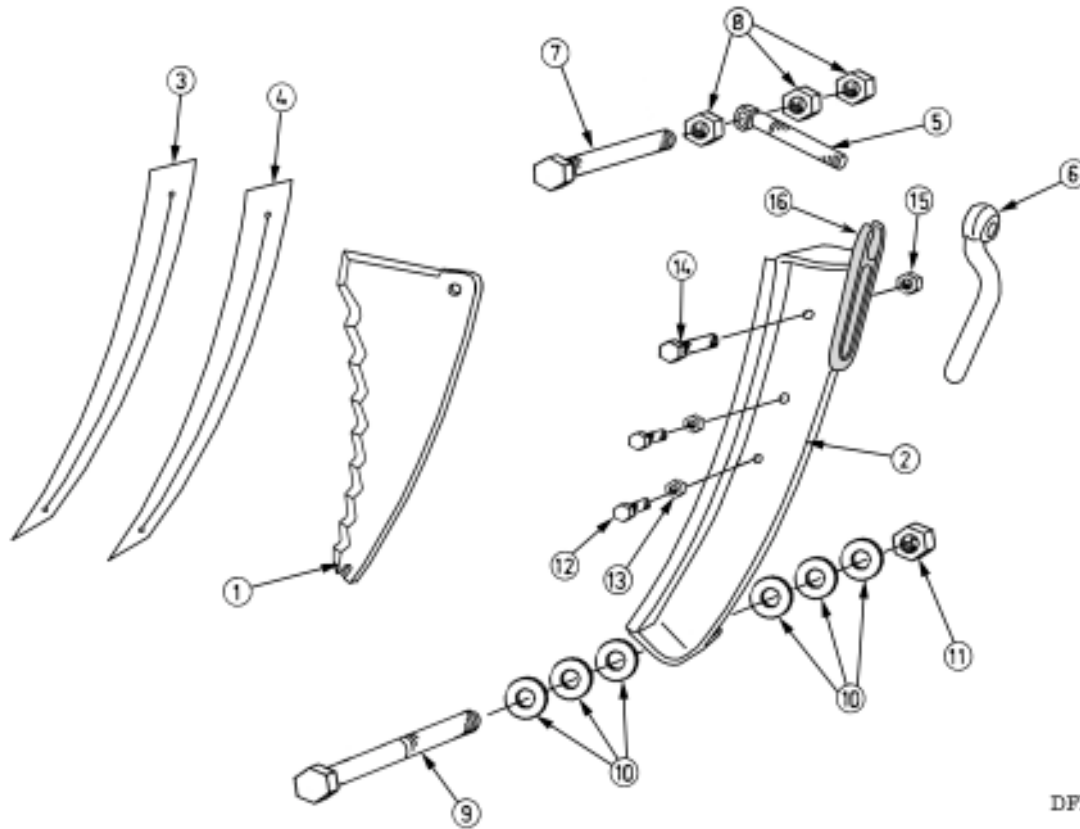
Item	Part Number	Description	Qty.	Notes
1	742512	Front Frame Assembly	1	
2	742513	Top Box Section	1	
3	7425125	Front LHS Post Assembly	1	
4	FA11650	M16 x 100 Bolt	10	
5	FA00140P	M16 Washer	24	
6	FA02050P	M16 Self-locking Nut	12	
7	FA12010	M20 x 50 Bolt	1	
8	FA00150P	M20 Washer	2	
9	FA02060P	M20 Self-locking Nut	1	
10	FA00110P	M10 Washer	24	
11	FA11025P	M10 x 40 Bolt	10	
12	FA01030P	M10 Plain Nut	10	
13	FA11625P	M16 x 50 Bolt	2	
14	FA11015P	M10 x 30 Bolt	4	
15	7000495-00	Electric Control Bank Adapter Plate	1	Optional only used with Electric Controls



DPPM028

2.05 Front Closing Plates

Item	Part Number	Description	Qty.	Notes
1	700102	Front Cover Panel	1	
2	7005475	Rotor Closing Plate	1	25mm Lip
3	FA11015	M10 x 30 Bolt	8	
4	FA11020	M10 x 35 Bolt	4	
5	FA00110P	M10 Washer	24	
6	FA02030P	M10 Nut	12	

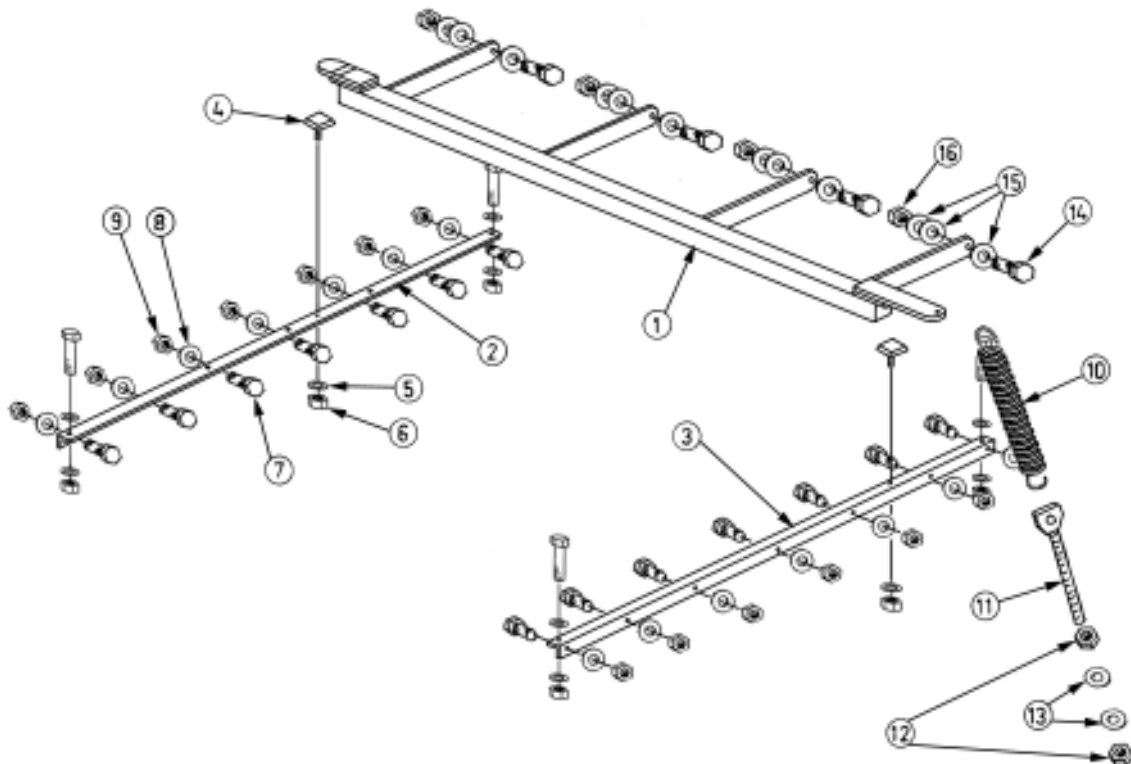


DFFPM018

2.06 Blades and Holders

Item	Part Number	Description	Qty.	Notes
1	7466850	Diet Feeder Cutting Blade	10	12m ³
1	7466850	Diet Feeder Cutting Blade	12	16m ³
1	7466850	Diet Feeder Cutting Blade	17	20m ³
2	742584	Blade Holder	1	
3	7466868	Neoprene Blade Seal	1	
4	7466860	Rubber Blade Seal	1	
5	7466900	Threaded Tie Bar	1	M16 Thread
6	7466890	Handle	1	M16 Thread
7	FA11671	M16 x 140 Bolt	1	
8	FA10150	M16 Nut	3	
9	FA12055	M20 x 140 Bolt	1	
10	FA00150P	M20 Washer	6	
11	FA02060P	M20 Self-locking Nut	1	
12	FA11010P	M10 x 25 Bolt	2	
13	FA01030P	M10 Nut	2	
14	FA11220	M12 x 40 Bolt	1	
15	FA02040P	M12 Self-locking Nut	1	
16	7466910	Receiver Plate	1	Use with 5 and 6

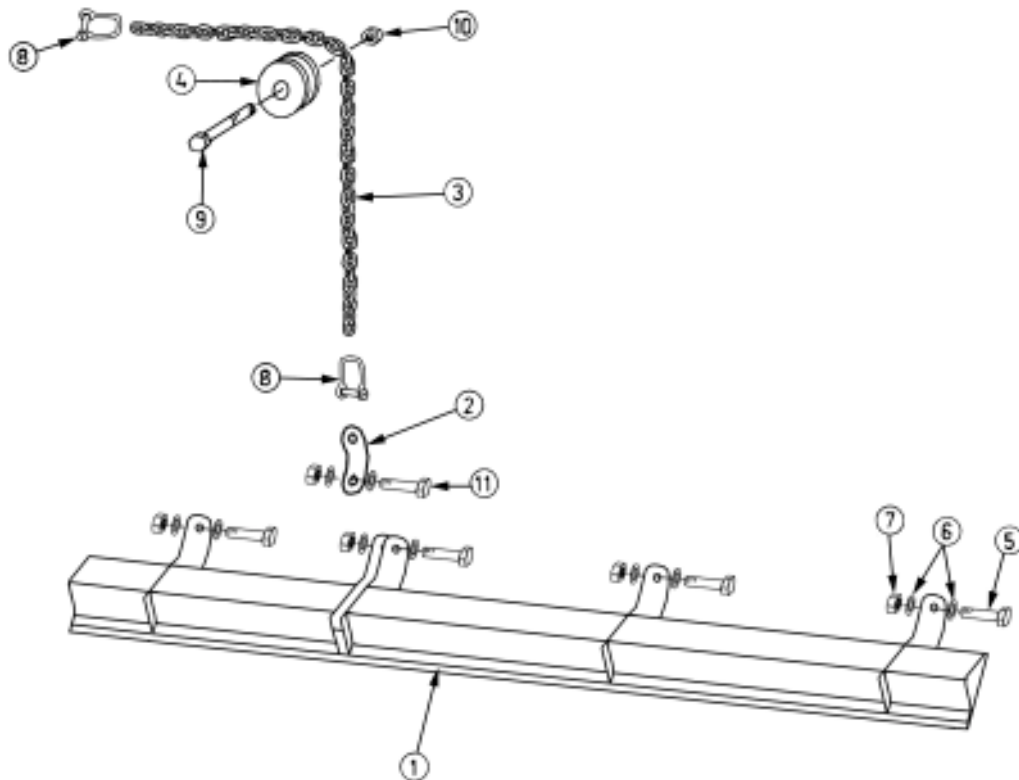
DPPM019



2.07 Sprung Bar Assembly

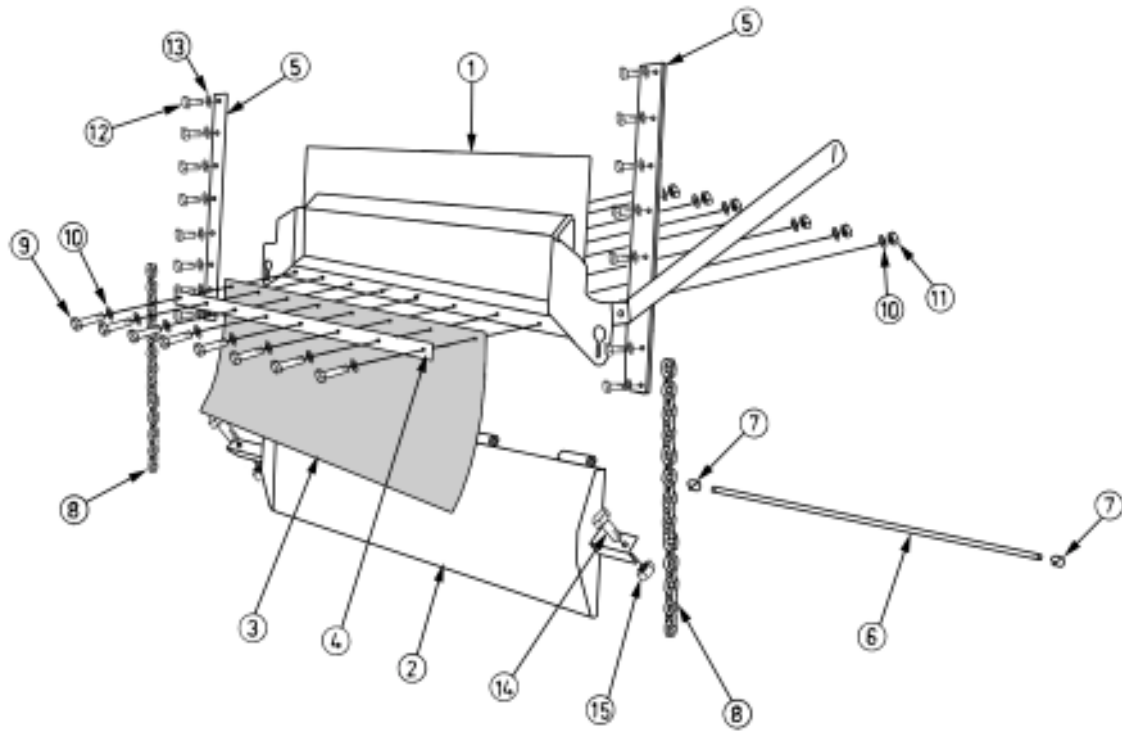
Item	Part Number	Description	Qty.	Notes
1	742578	Sprung Bar Assembly	1	12m ³
	746578	Sprung Bar Assembly	1	16m ³
	748578	Sprung Bar Assembly	1	20m ³
2	742117	Front Panel Top Angle	1	
3	742142	Rear Panel Top Angle	1	
4	7246870	80 x 25 Square Buffer	2	
5	FA00130P	M12 Washer	2	
6	FA02040P	M12 Self-locking Nut	2	
7	FA11020P	M10 x 35 Bolt	18	
8	FA00110P	M10 Washer	18	
9	FA01030P	M10 Plain Nut	18	
10	724645	Tension Spring	1	
11	742547	Tensioner	1	
12	FA01070P	M24 Plain Nut	2	
13	FA00170	M24 Washer	2	
14	FA12015	M20 x 60 Bolt	4	Quantity may vary with Model
15	FA00150P	M20 Washer	12	Quantity may vary with Model
16	FA02060P	M20 Selflocking Nut	4	Quantity may vary with Model

DFFM020



2.08 Auger Cover

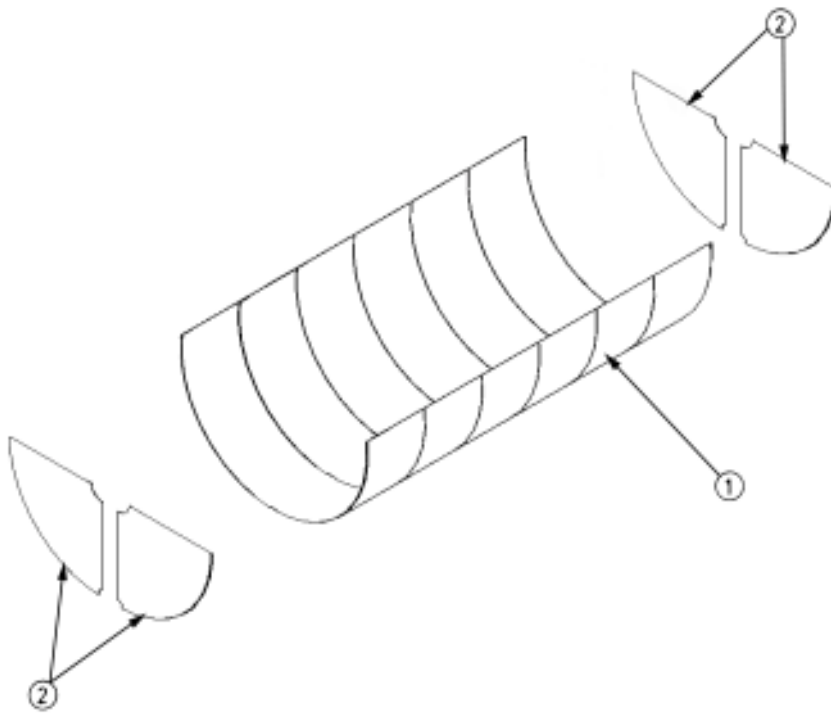
Item	Part Number	Description	Qty.	Notes
1	7425805	Auger Guard	1	12m ³
	7465805	Auger Guard	1	16m ³
	7485805	Auger Guard	1	20m ³
2	742181	Auger to Chain Link	1	
3	7466740	Chain	1	39" Long
4	7421884	Nylon Pulley	1	
5	FA12420	M24 x 80 Bolt	3	Quantity will vary with Model
6	FA00170	M24 Washer	14	Quantity will vary with Model
7	FA02070P	M24 Self-locking Nut	5	Quantity will vary with Model
8	700651	"D" Shackle	2	
9	FA11655	M16 x 110 Bolt	1	
10	FA02050P	M16 Self-locking Nut	1	
11	FA12430	M24 x 100 Bolt	1	



DFPM023

2.09 Dispenser Door

Item	Part Number	Description	Qty.	Notes
1	742535	Dispenser Door	1	
2	742538-01	Chute	1	
3	724267	Rubber Flap	1	
4	7422335	Clamp Plate	1	
5	742219	Outer Rail	2	
6	742213	Hinge Pin	1	
7	FA17210	1/4" Lynch Pin	2	
8	701650	Chain	2	27" Long
9	FA10850P	M8 x 40 Bolt	8	
10	FA00100P	M8 Washer	16	
11	FA02020P	M8 Self-locking Nut	8	
12	FA11005P	M10 x 16 Bolt	16	
13	FA00110P	M10 Washer	16	
14	FA11215P	M12 x 30 Bolt	1	
15	FA02040P	M12 Self-locking Nut	1	



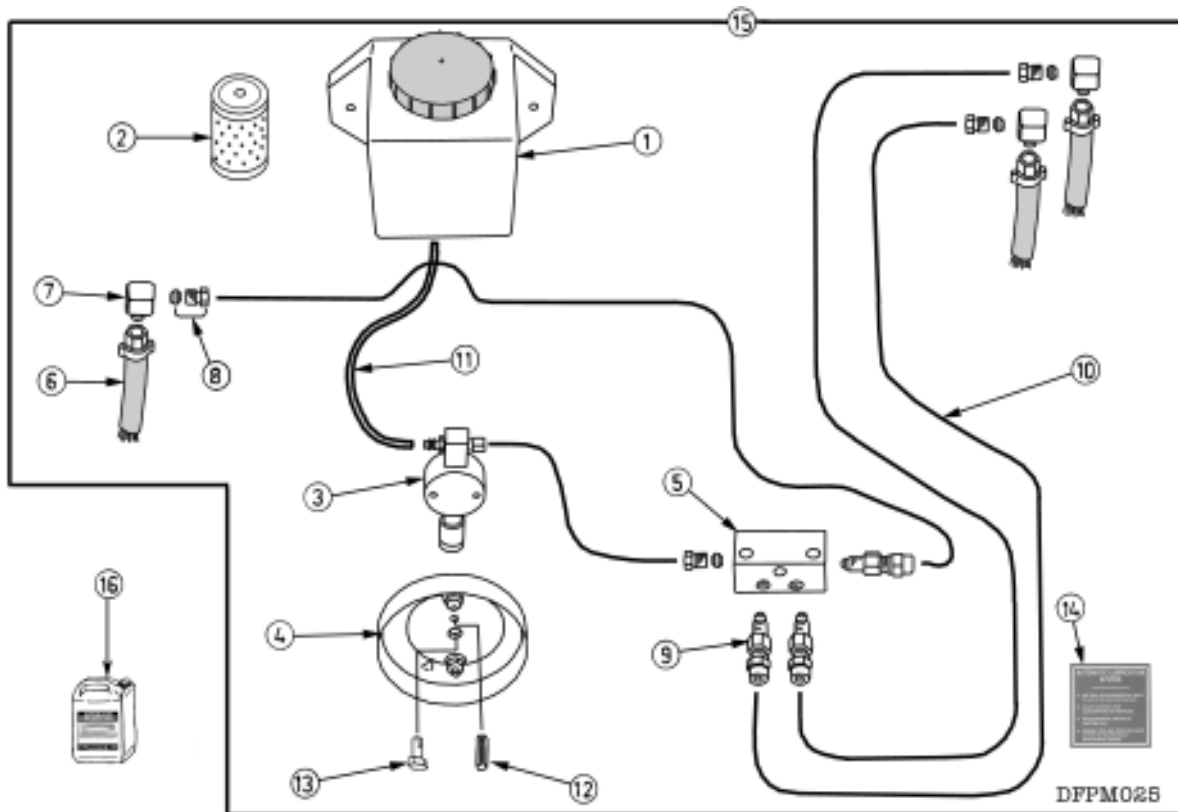
DPPM024

2.10 Linner Kit

Item	Part Number	Description	Qty.	Notes
1	700705	Vari- Cut Linner Kit	1	12m ³
	700703	Vari- Cut Linner Kit	1	16m ³
	700707	Vari- Cut Linner Kit	1	20m ³
2	700710	Vari-Cut End Peice	4	Optional

Auxillary Systems

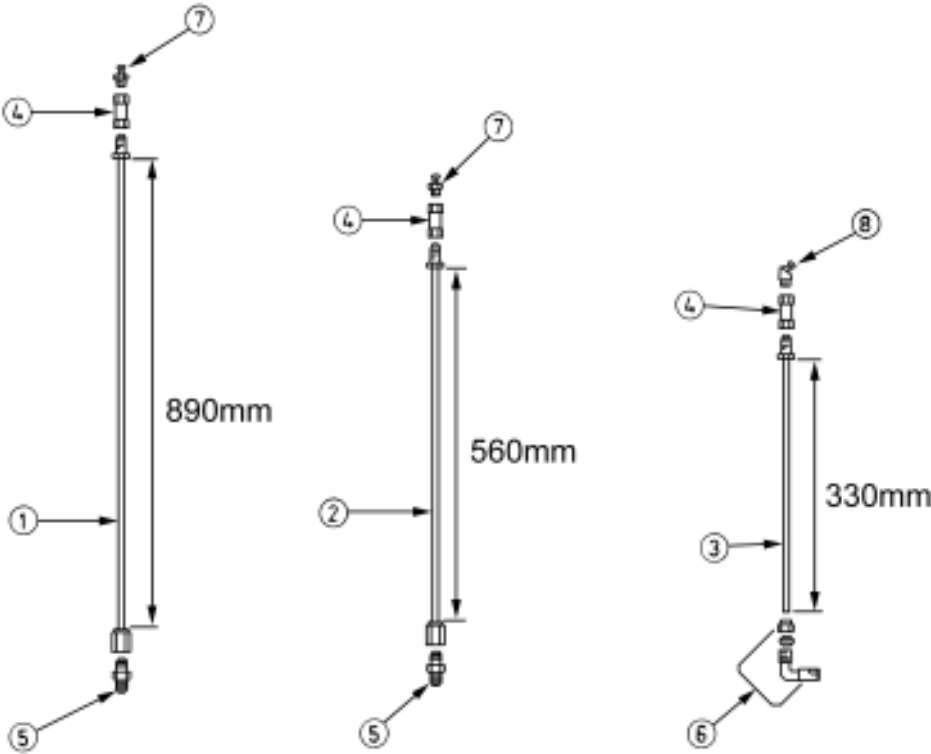
Auxillary Systems	39
3.01 Automatic Lubrication System	40
3.02 Remote Greaser System	41
3.03 Load Measurement System	42
3.04 External Hydraulic System	45
3.05 Cable Control Internal Hydraulic System	47
3.06 Direct Tractor Control Internal Hydraulic System	49
3.07 Electrical Control Internal Hydraulic System	51
3.08 Cable Control Spare Parts	52
3.09 Electrical Control Spare Parts	53
3.10 Hydraulic Brake Lines	55



3.01 Automatic Lubrication System

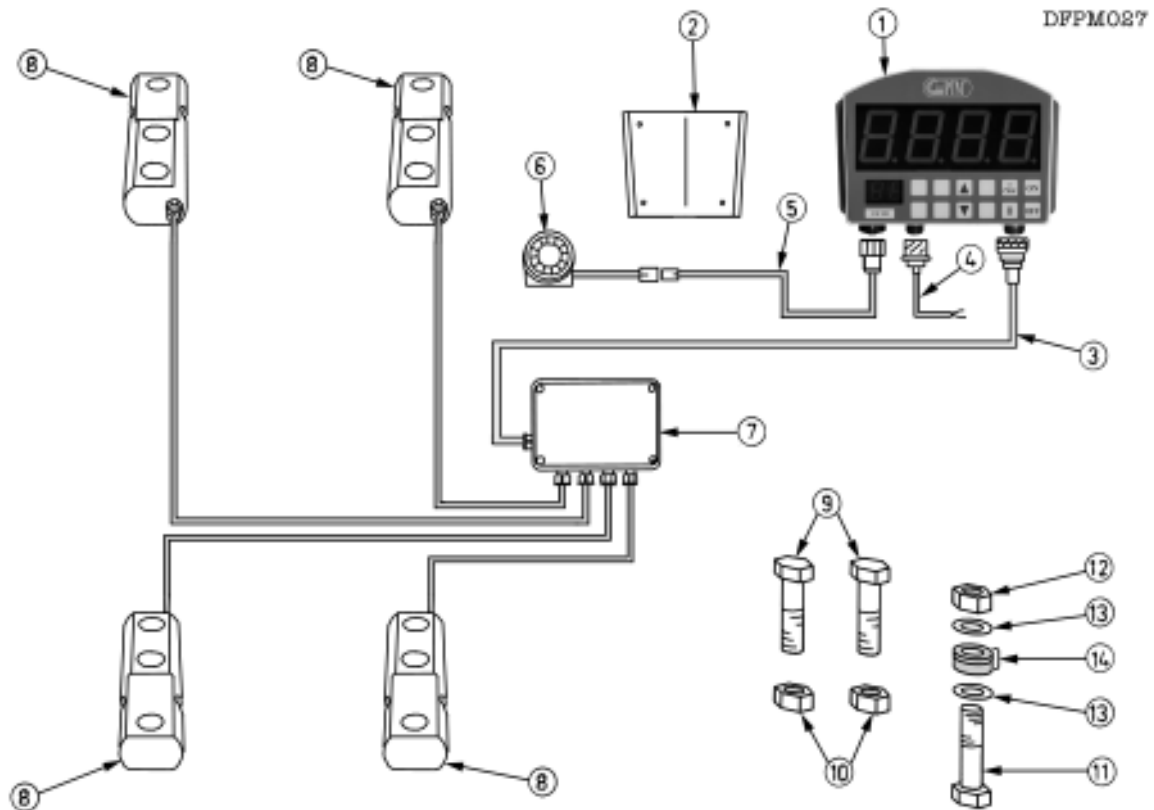
Item	Part Number	Description	Qty.	Notes
1	72468601	Oil Reservoir	1	
2	72468603	Oil Filter	1	
3	72468611	Pump	1	
4	72468613	Eccentric Cam	1	
5	72468617	4 Way Manifold	1	
6	72468607	Brush	3	
7	72468605	90 Degree Adapter	3	
8	72468609	Sleeve Nut and Olive	3	
9	72468615	Metering Unit	3	
10	72468621	Flexi Nylon Tube		As Required
11	72468619	Neoprene Tube		As Required
12	FA17125	1/4" x 11/4" Roll Pin	1	
13	FA11010	M10 x 25 Bolt	1	
14	72468623	Decal	1	
15	7246860	Automatic Lubrication Complete Kit		
16	820414	Gearbox Oil	1	5 lts

DFMP086



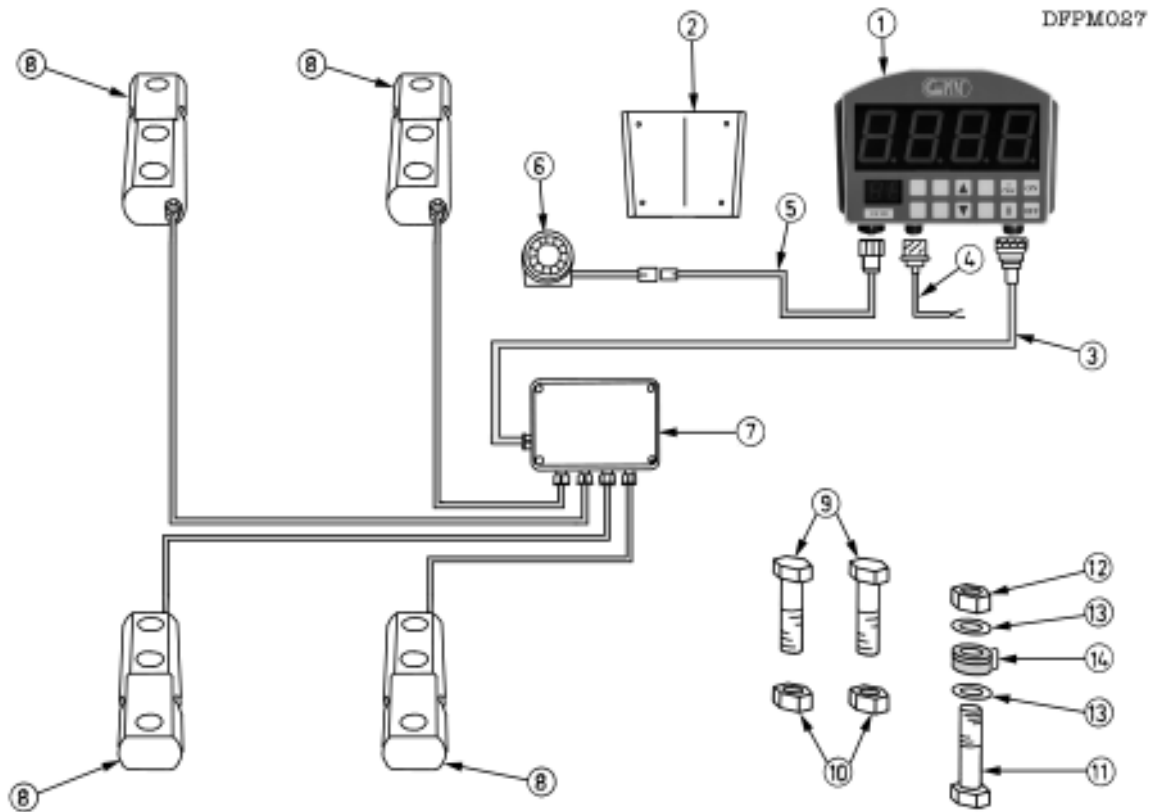
3.02 Remote Greaser System

Item	Part Number	Description	Qty.	Notes
1	72468625	890mm Grease Pipe Assembly	1	For Lower Drive Shaft Rear Bearing
2	72468627	560mm Grease Pipe Assembly	1	For Lower Drive Shaft Front Bearing
3	72468629	330mm Grease Pipe Assembly	2	For Jockey Arm Sprockets
4	72468644	Female - Female Adapter	3	M10 x 1.0
5	72468642	Male - Male Adapter	2	M10 x 1.0
6	72468646	1/8" BSP Stud Elbow	1	
7	FA18162	M10 x 1.0 Straight Grease Nipple	2	
8	FA18165	M10 45 degree Grease Nipple	1	
	72468636	Male Pipe End Fiting M10 x 1.0		
	72468640	Female Pipe End Fitting M10 x 1.0		

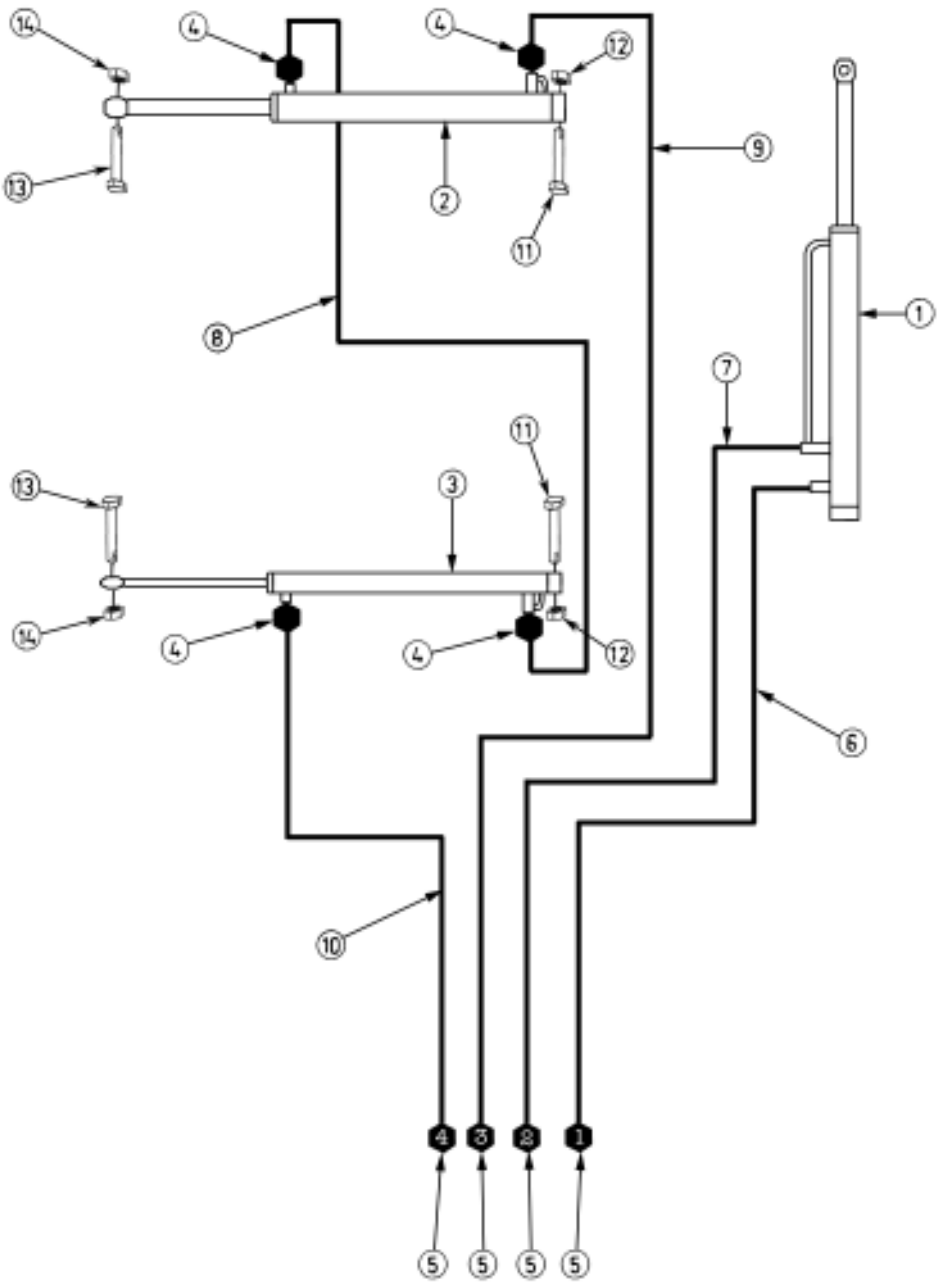


3.03 Load Measurement System

Item	Part Number	Description	Qty.	Notes
1	7246200	FC 20 Weighing Indicator	1	
	72462002	FC 20 Front Cover	1	
	72462004	FC 20 Circuit Board	1	
	7246205	FC30 Weighing Indicator	1	
	72462052	FC30 Front Cover	1	
	72462054	FC 30 Circuit Board	1	
	7246224	FC 500 Weighing Indicator	1	
	7246222	FC 500 Front Cover	1	
	7246226	FC500 Circuit Board	1	
	7246280	Graphics Plus Weighing Indicator	1	
	72462802	Graphics Plus Front Cover	1	
	72462804	Graphics Plus Circuit Board	1	
2	72462001	Weighing Indacator Mounting Bracket	1	
3	7246250	Junction Cable	1	
4	7246260	Power Cable	1	
5	7246275	Alarm Cable	1	
6	7246270	Alarm	1	
7	7246240	Junction Box	1	
8	7246230	Load Cell	4	
9	FA12450	M24 x 120 Bolt Fine Thread	8	



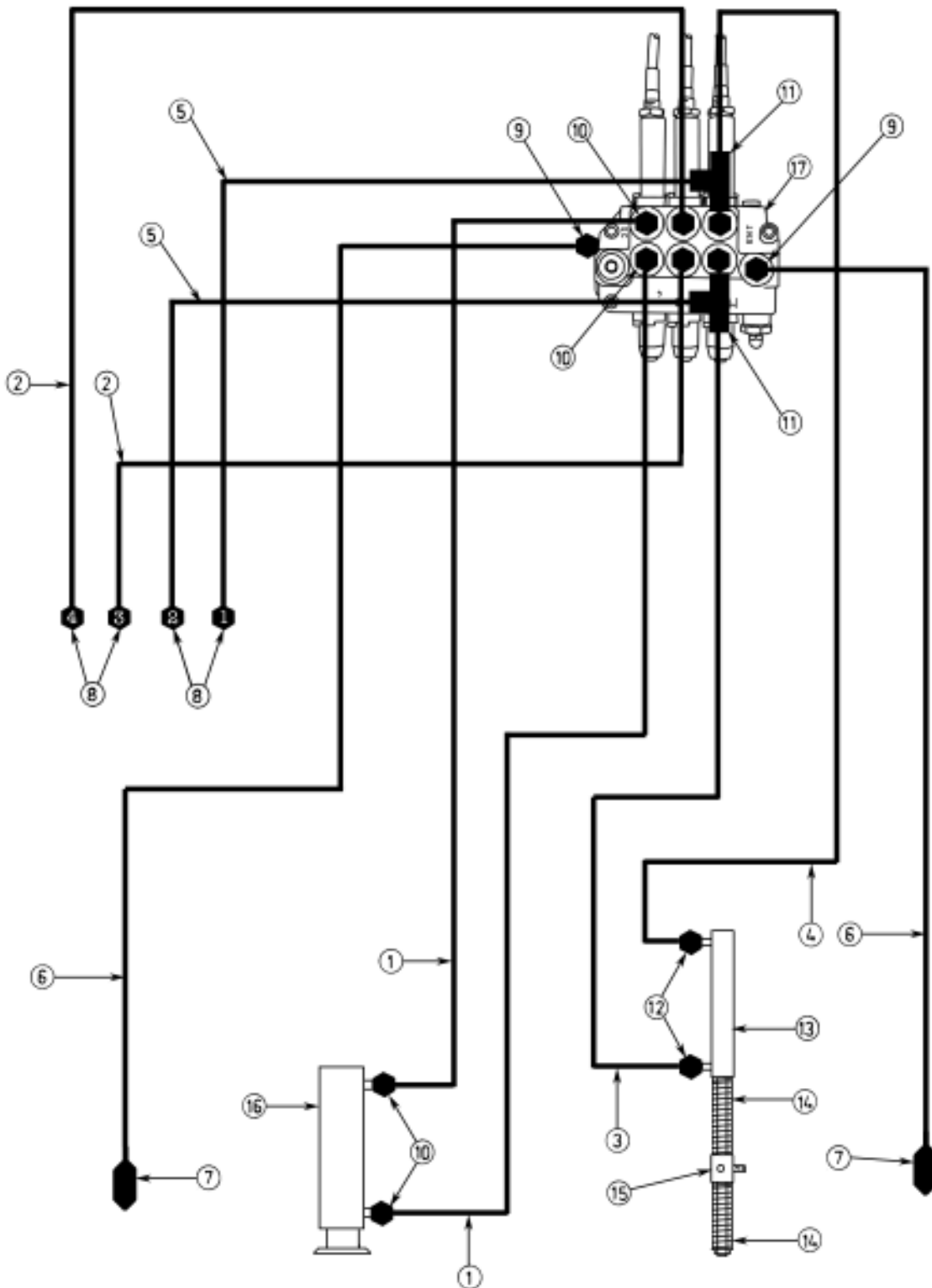
Item	Part Number	Description	Qty.	Notes
10	FA02080P	M24 Self-locking Nut Fine Thread	8	
11	FA12042P	M20 x 110 Fine Thread	4	
12	FA02062P	M20 Self-locking Nut Fine Thread	4	
13	FA00150P	M20 Washer	8	
14	7006340	Cup - Cone Washer Set	4	



DFFM028

3.04 External Hydraulic System

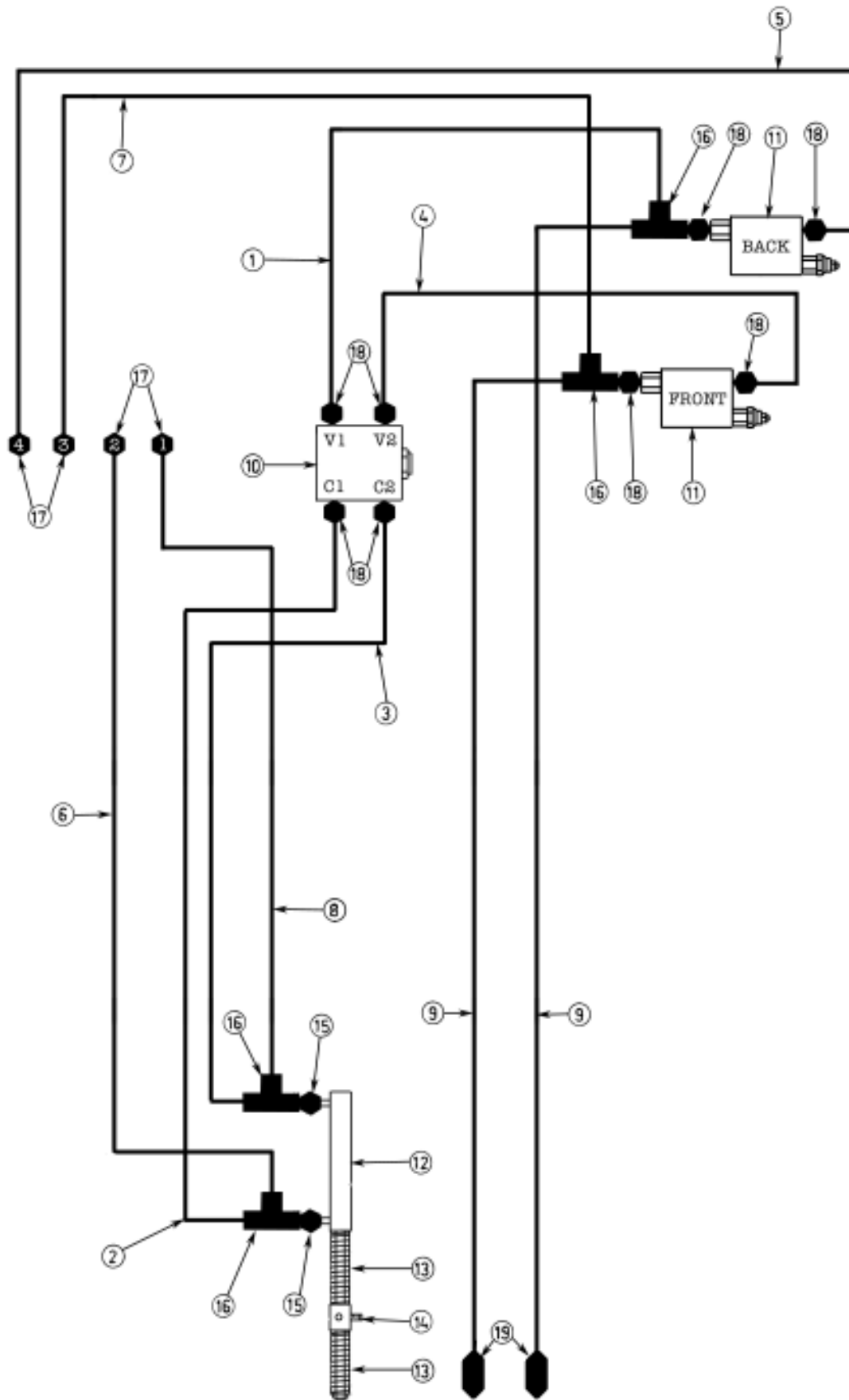
Item	Part Number	Description	Qty.	Notes
1	HC70030	Auger Guard Cylinder	1	
	HC81040	Seal Kit For Above	1	
2	HC70150	Dispenser Door Master Cylinder	1	
	HC870150	Seal Kit For Above	1	
3	HC70160	Dispenser Door Slave Cylinder	1	
	HC870160	Seal Kit For Above	1	
4	HY05530	M18 Male - Made Adapter	4	
5	HY05295	M18 Bulkhead Fitting	4	
6	HY27001	Hose	1	
7	HY27003	Hose	1	
8	HY27005	Hose	1	
9	HY27007	Hose	1	
10	HY27009	Hose	1	12 m³ Models Only
10	HY27011	Hose	1	16 m³ and 20 m³ Models
11	FA12060P	M20 x 160 Bolt	2	
12	FA02060P	M20 Self-locking Nut	2	
13	FA08060P	4" x 3/4" UNF Bolt	2	
14	FA02270P	3/4" UNF Self-locking Nut	2	



DFPM029

3.05 Cable Control Internal Hydraulic System

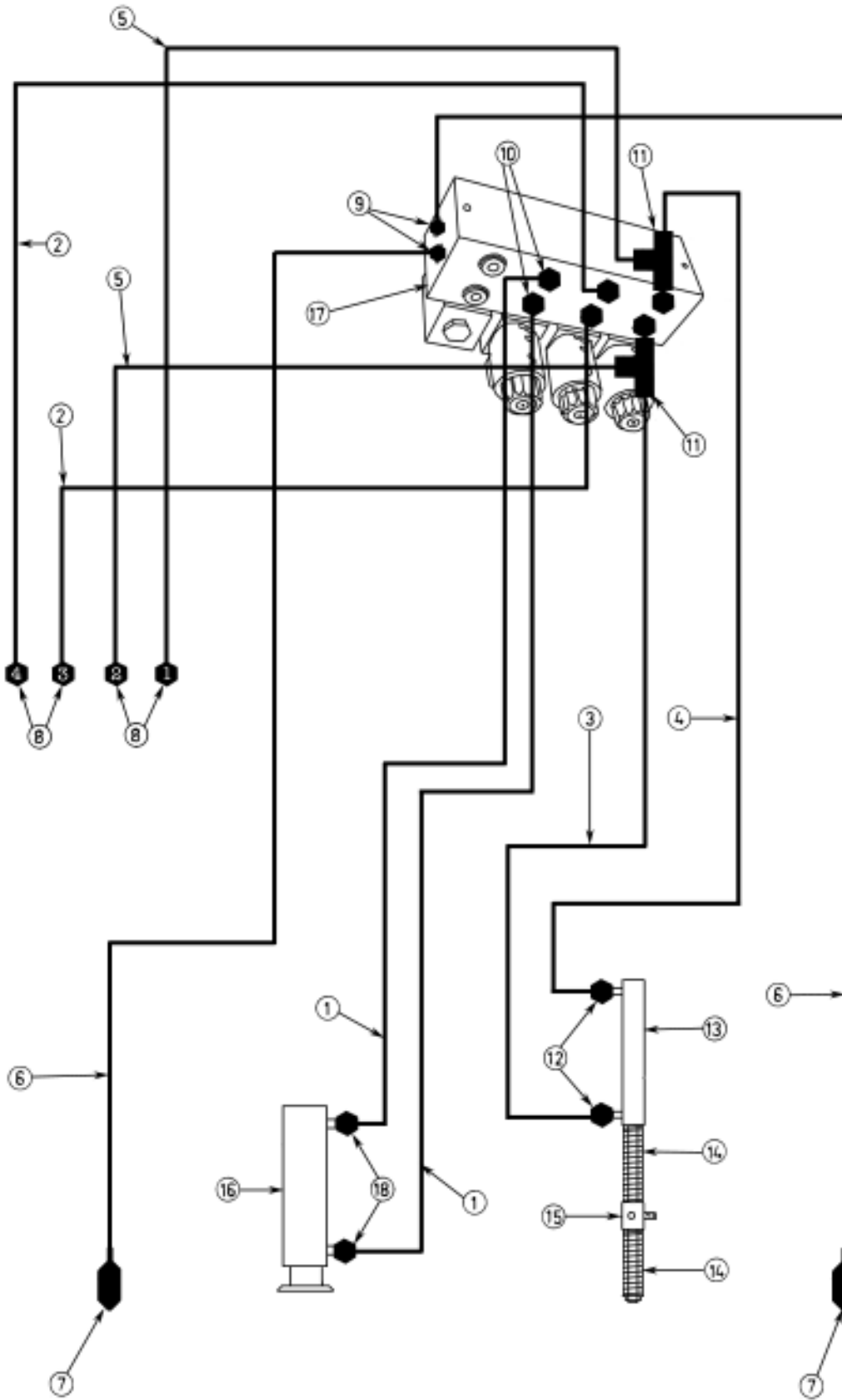
Item	Part Number	Description	Qty.	Notes
1	HY27014	Hose	2	
2	HY27016	Hose	2	
3	HY27046	Hose	1	
4	HY27044	Hose	1	
5	HY27022	Hose	2	
6	HY27024	Hose	2	
7	HY08030	1/2" Ford Male Probe	2	
	HY10030	1/2" Dowty Seal	2	
8	HY05295	M18 Bulkhead Fitting	4	
9	HY05660	M22 - 1/2" BSP M-M Adapter	2	
	HY10030	1/2" Dowty Seal	2	
10	HY05640	M18 - 1/2" BSP M-M Adapter	8	
	HY10030	1/2" Dowty Seal	8	
11	HY04610	M18 Male - Female - Male "T"	2	
12	HY05625	M18 - 1/4" BSP M-M Adapter	2	
13	HC70045	Type 2 Gear Change Ram	1	
	HC870045	Seal Kit For Above	1	
14	7246806	Spring	2	
15	7345615	Indicator Sliding Bush	1	
16	HC70200	Hydraulic Jack	1	
	HC87020	Seal Kit For Above	1	
17	HY092415	3 Lever Cable Control Valve Bank	1	



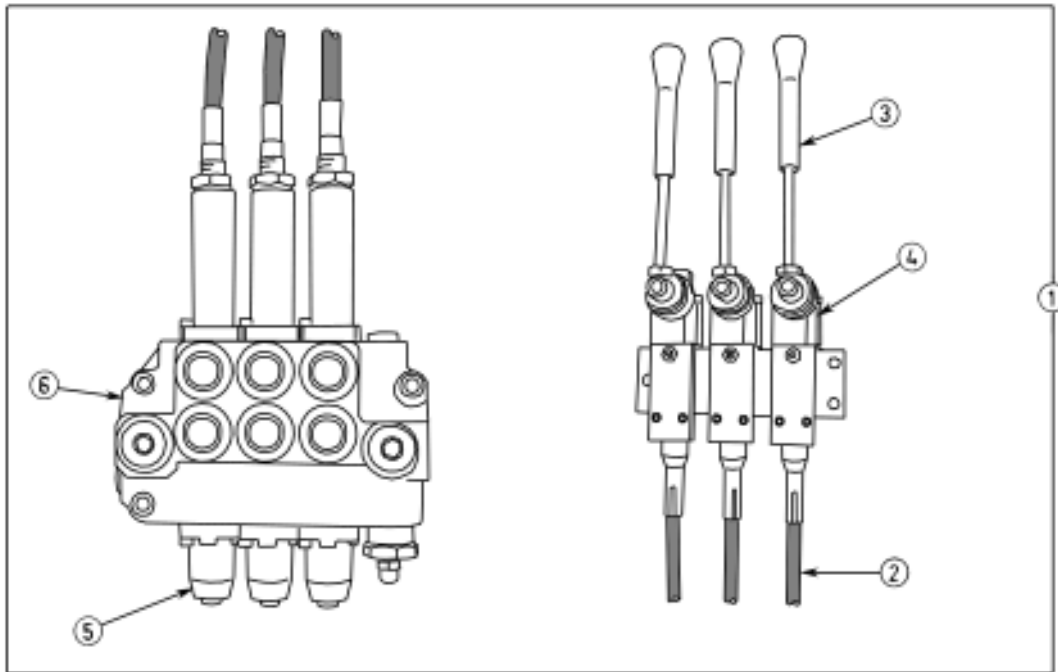
DFPM030

3.06 Direct Tractor Control Internal Hydraulic System

Item	Part Number	Description	Qty.	Notes
1	HY27026	Hose	1	
2	HY27028	Hose	1	
3	HY27030	Hose	1	
4	HY27032	Hose	1	
5	HY27034	Hose	1	
6	HY27036	Hose	1	
7	HY27038	Hose	1	
8	HY27040	Hose	1	
9	HY27042	Hose	2	
10	HY09425	Pilot Operated Check Valve	1	
11	HY09395	$\frac{3}{8}$ " Priority Valve	2	
12	HC70045	Type 2 Gear Change Ram	1	
	HC870045	Seal Kit For Above	1	
13	7246806	Type 2 Springs	2	
14	7345615	Indicator Sliding Bush	1	
15	HY05625	M18 - $\frac{1}{4}$ " BSP Male - Male Adapter	2	
	HY10010	$\frac{1}{4}$ " Dowty Seal	2	
16	HY04610	M18 Male - Female - Male "T"	4	
17	HY05295	M18 Bulkhead Fitting	4	
18	HY05630	M18 - $\frac{3}{8}$ " BSP Male - Male Adapter	8	
	HY10020	$\frac{3}{8}$ " Dowty Seal	8	
19	HY08030	$\frac{1}{2}$ " Male Ford Probe	2	



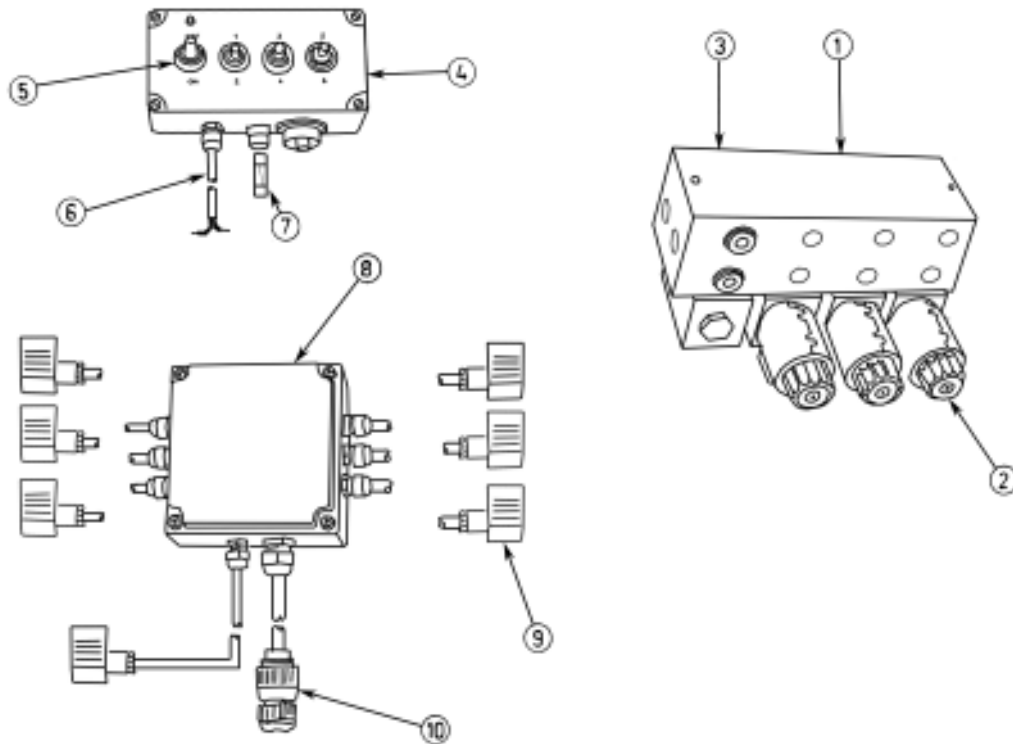
DFFPM032



DFFM031

3.08 Cable Control Spare Parts

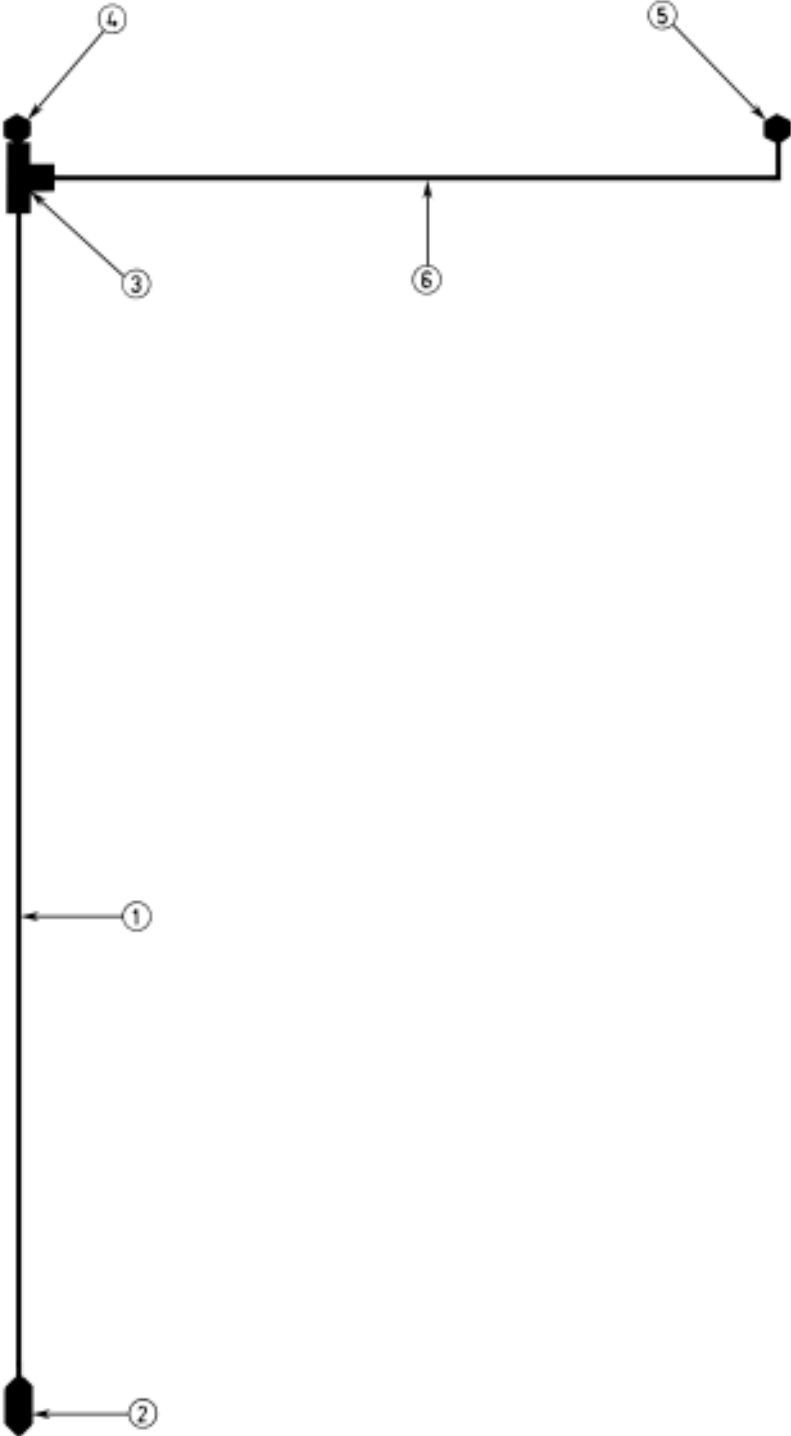
Item	Part Number	Description	Qty.	Notes
1	HY092415	Complete Cable Control Unit	1	Supplied Without Levers
2	HY092417	3m Black Cable	3	
3	HY09242	M10 Lever	3	
4	HY09246	M10 Cast Top	3	
5	HY09247	Spring Cast Cap	3	



DFPM033

3.09 Electrical Control Spare Parts

Item	Part Number	Description	Qty.	Notes
1	HY09231	3 Stage Electric Valve Bank	1	
2	HY092311	Solenoid	7	
3	HY092312	Valve Bank Seal Kit	1	
4	HY09232	Control Box	1	
5	HY092321	Control Box Switch	3	Momentary on - off - on
	HY092322	Control Box Power Switch	1	Toggle off - on
6	HY092331	Control Box Power Lead	1	
7	8017111	Control Box Fuse	1	
8	HY09233	Junction Box	1	
9	HY092333	3 Pin Plug	7	
10	HY092332	Multi-Pin Plug	1	



DFFM034

